

# Parish Vibrancy Survey Summary

Survey concluded Monday, March 16, 2015

## Summary Introduction

---

The Parish Vibrancy Survey data has been compiled in multiple views to gain understanding of our parish strengths and areas for improvement. Responses from Saint Maria Goretti participants compared to responses from Mary Our Lady of Peace participants represent the base comparison in this presentation. Where additional insight was gained in specific questions, comparisons of responses based on mass attendance frequency and by age groups are also shown.

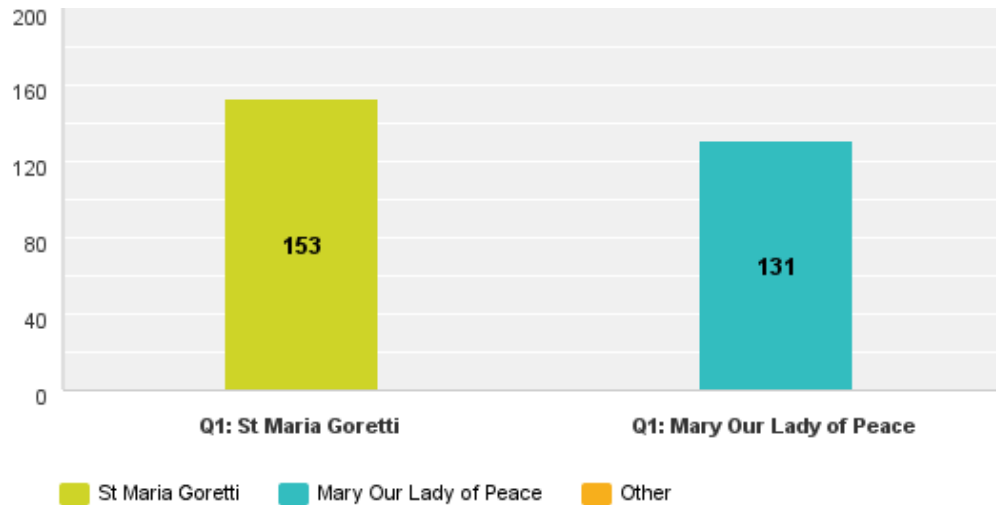
Overall, responses to one third of the questions reflect strengths for both of our parishes. Responses to two-thirds of the questions represent opportunities for improvement in communication and/or in execution.

Assessments on strengths or opportunities are noted on these slides.

---

# Q1: Are you registered with a Catholic Church?

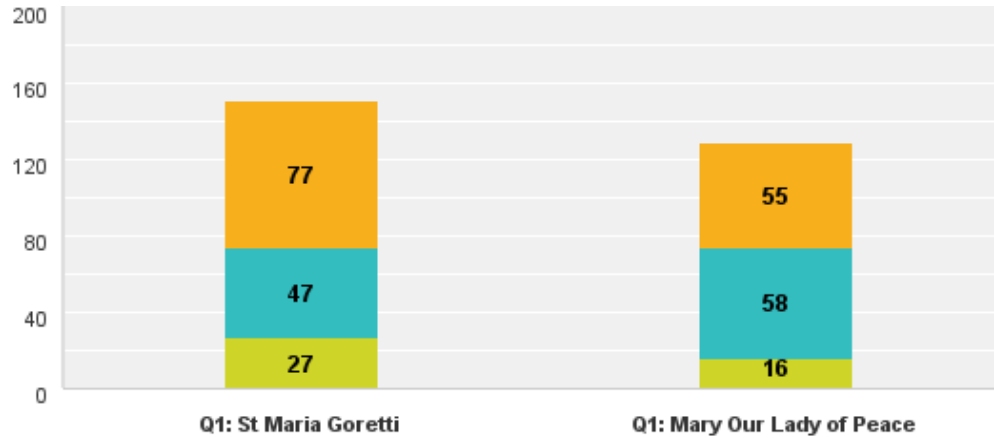
Answered: 284 Skipped: 0



153 survey respondents from SMG and 131 from MOLOP for a total of 284.

## Q2: How active are you in your parish?

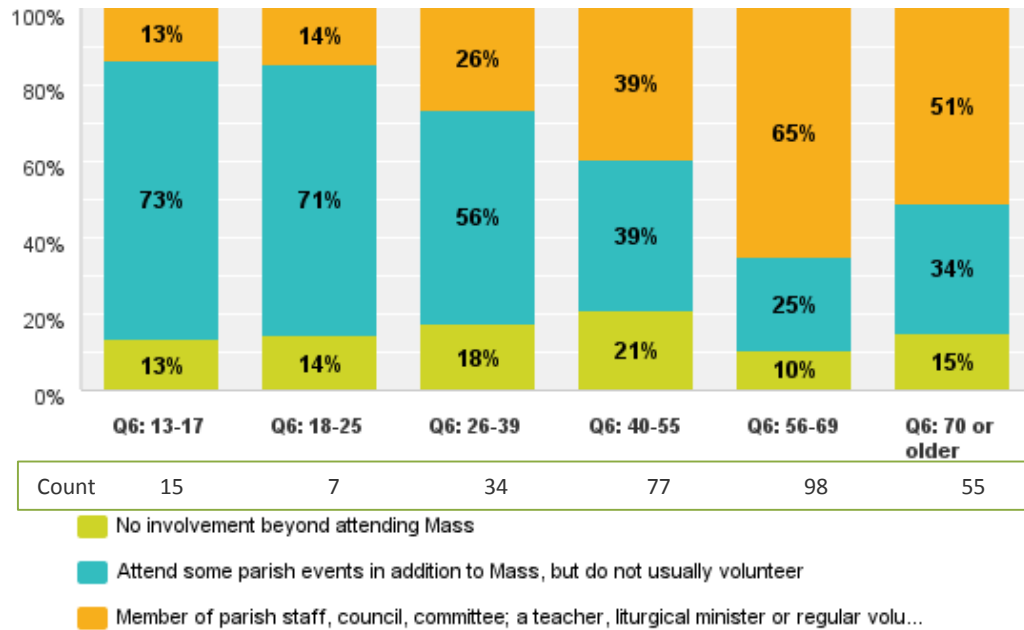
Answered: 280 Skipped: 4



- No involvement beyond attending Mass
- Attend some parish events in addition to Mass, but do not usually volunteer
- Member of parish staff, council, committee; a teacher, liturgical minister or regular volunteer

## Q2: How active are you in your parish?

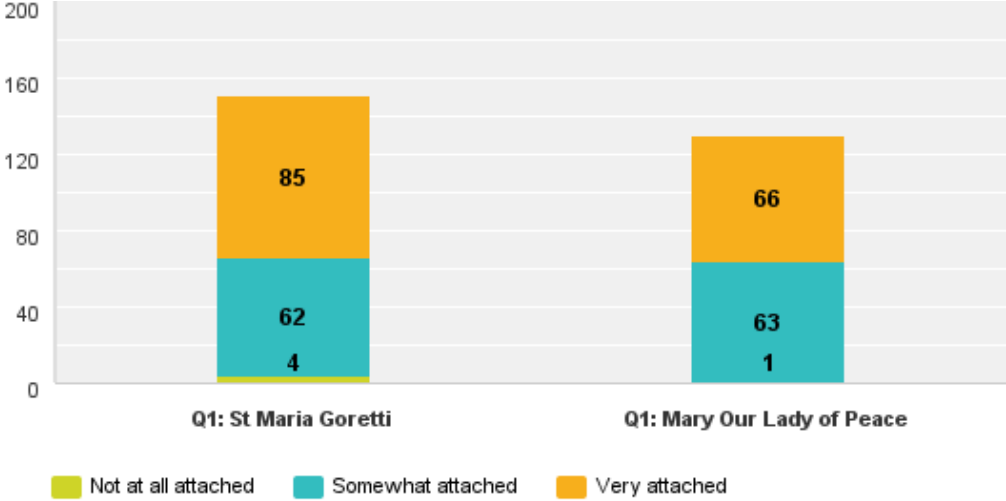
Answered: 282 Skipped: 4



Activity in the parish grows with age and those not involved remained constant.

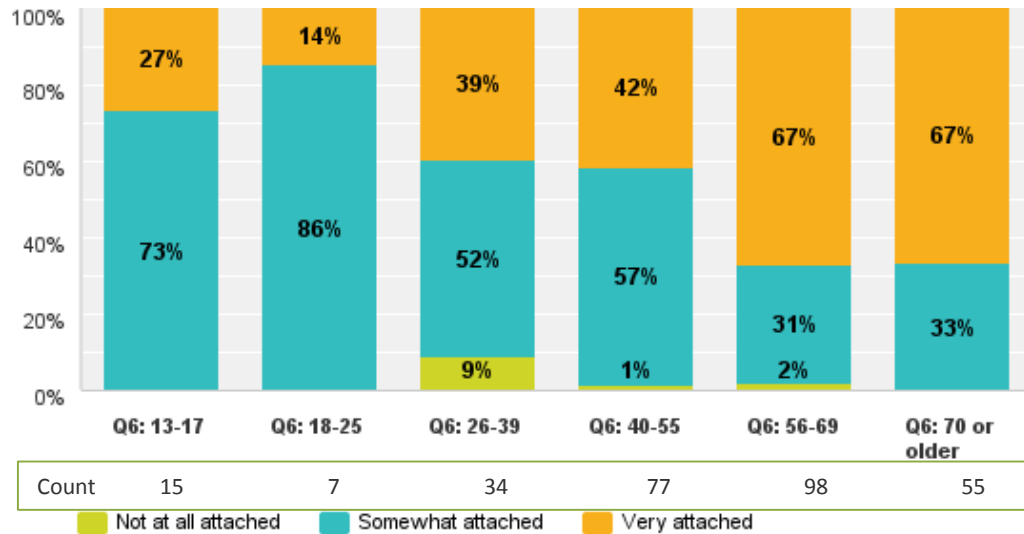
# Q3: How attached do you feel to your parish?

Answered: 281 Skipped: 3



# Q3: How attached do you feel to your parish?

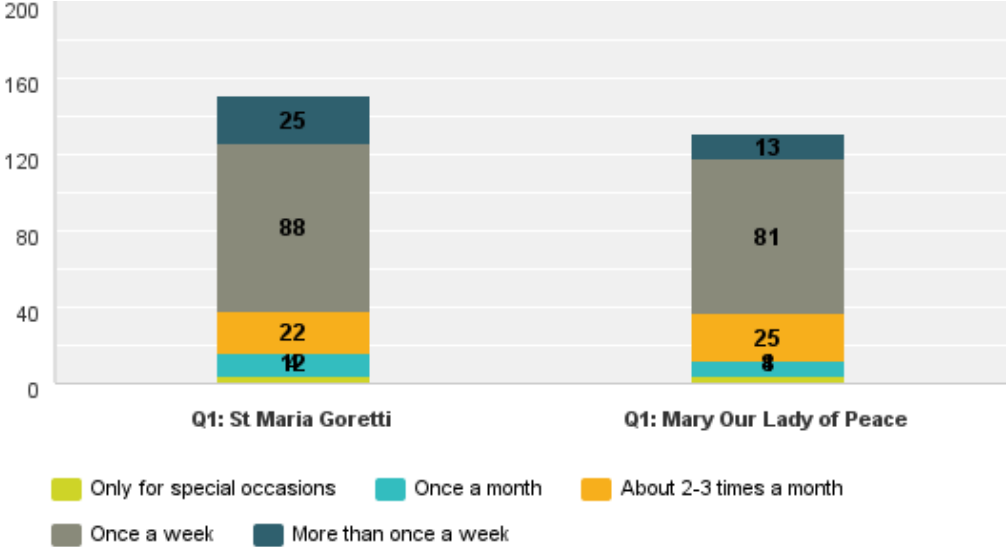
Answered: 283 Skipped: 3



The more involved the parishioners the more attached they feel to the parish.

# Q4: How often do you usually attend Mass at your parish?

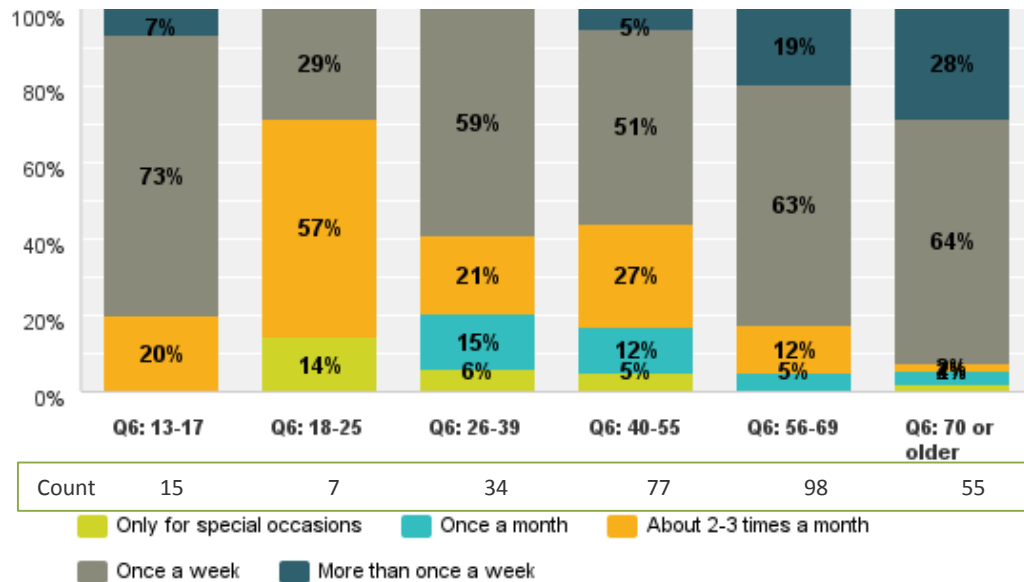
Answered: 282 Skipped: 2





# Q4: How often do you usually attend Mass at your parish?

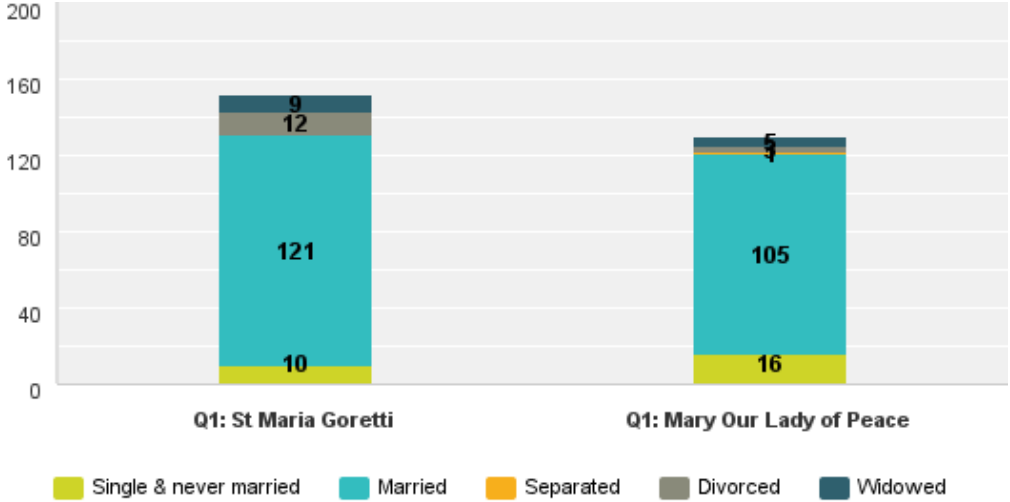
Answered: 284 Skipped: 2



With age, mass attendance increases.

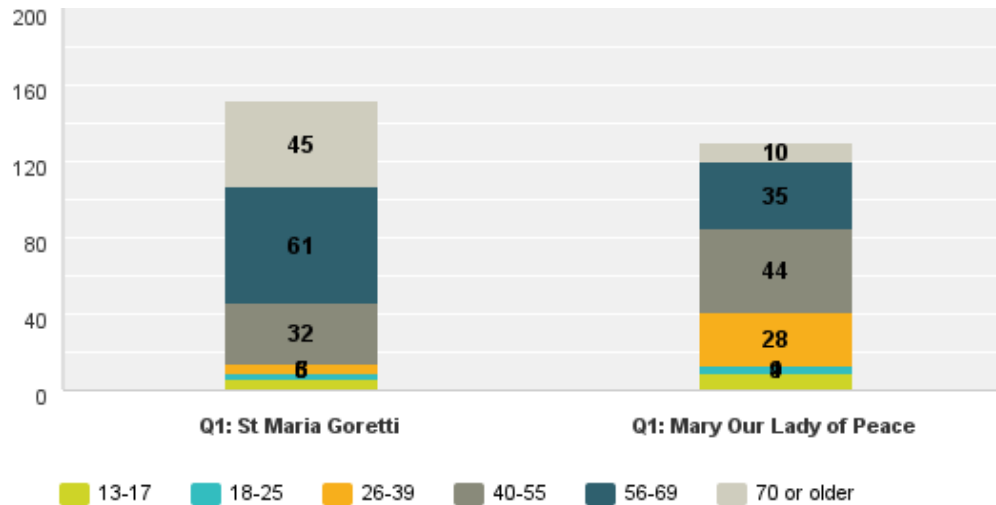
# Q5: Marital status:

Answered: 282 Skipped: 2



## Q6: Age Category

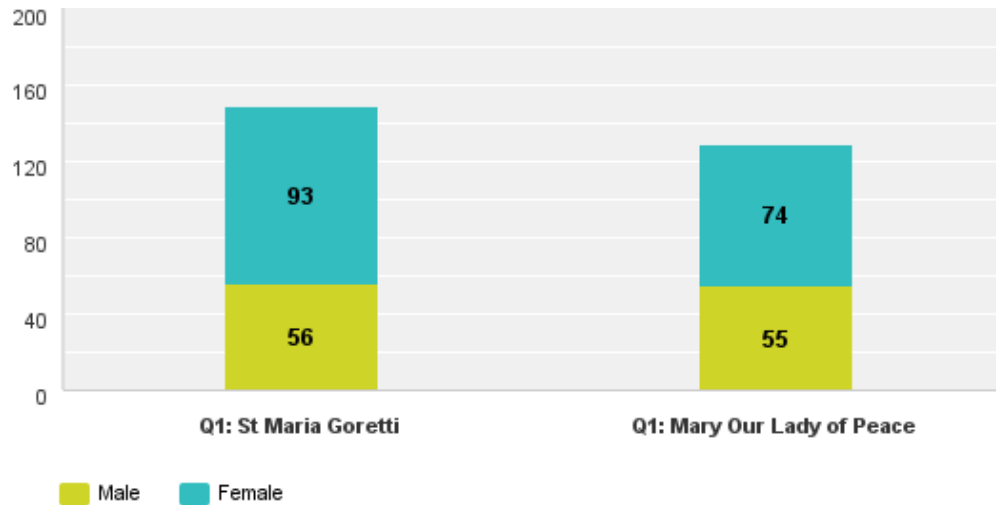
Answered: 282 Skipped: 2



St. Maria Goretti has an older demographic that completed the survey than Mary, Our Lady of Peace.

## Q7: Gender:

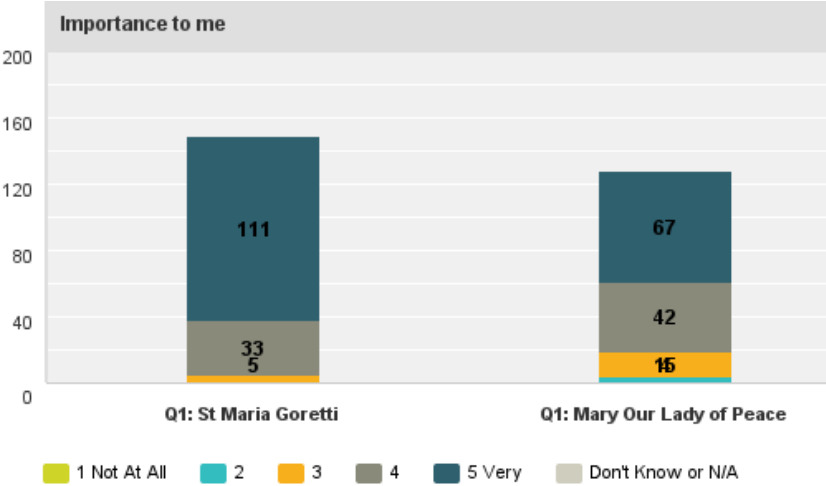
Answered: 278 Skipped: 6



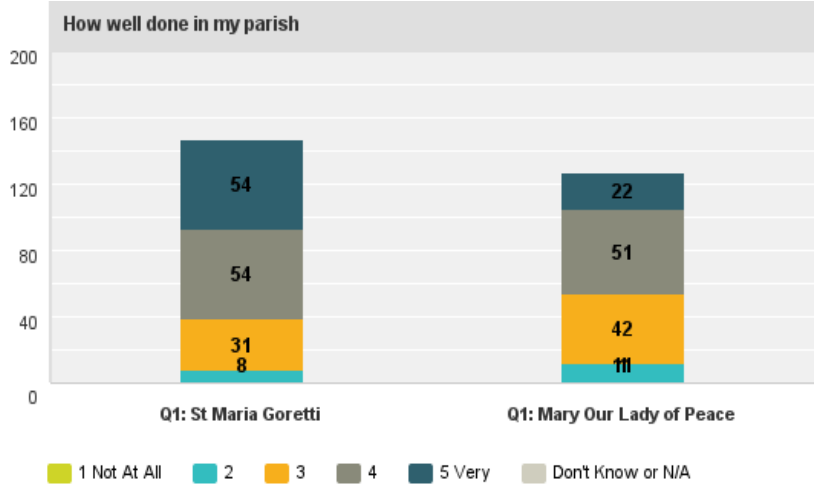
More females than males completed the survey at both parishes.

# Q8: Masses that are prayerful and spiritually moving

Answered: 280 Skipped: 4



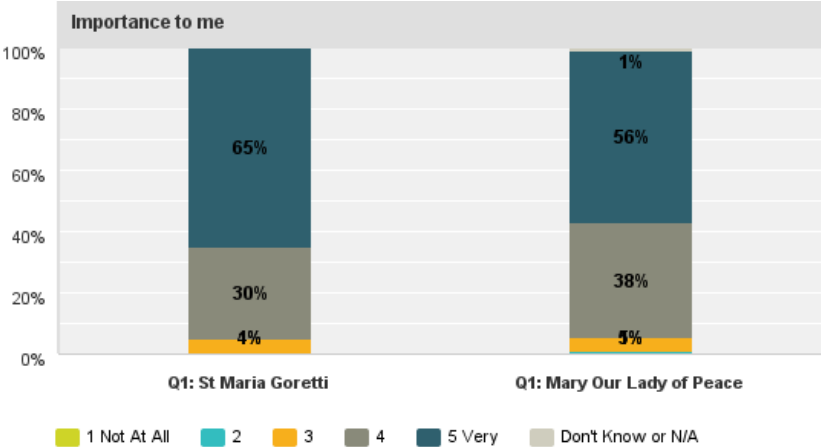
Answered: 280 Skipped: 4



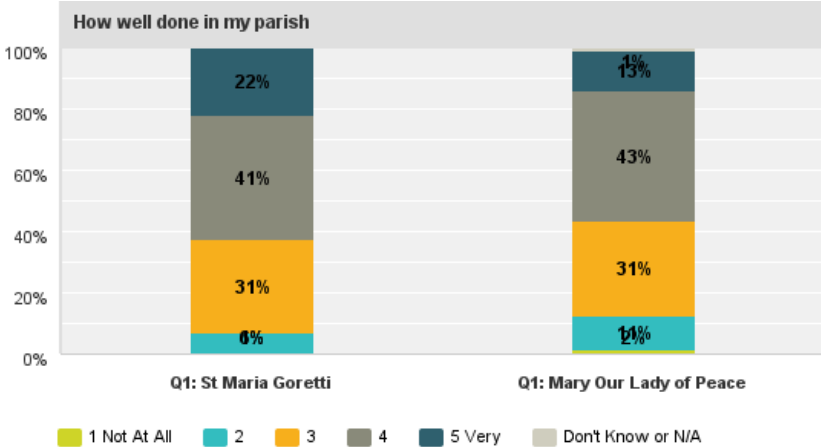
This is an opportunity for improvement.

# Q9: Masses that are thought provoking and intellectually stimulating

Answered: 278 Skipped: 6



Answered: 278 Skipped: 6

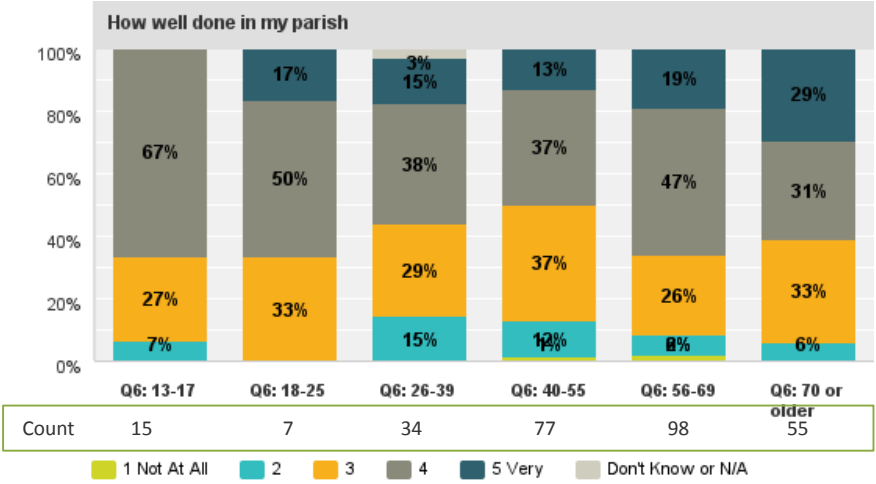
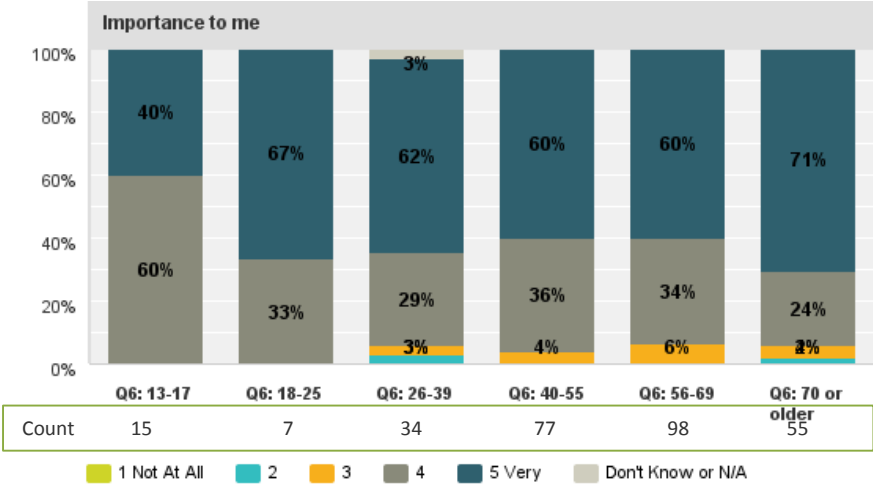


This is another area for improvement.

# Q9: Masses that are thought provoking and intellectually stimulating

Answered: 280 Skipped: 6

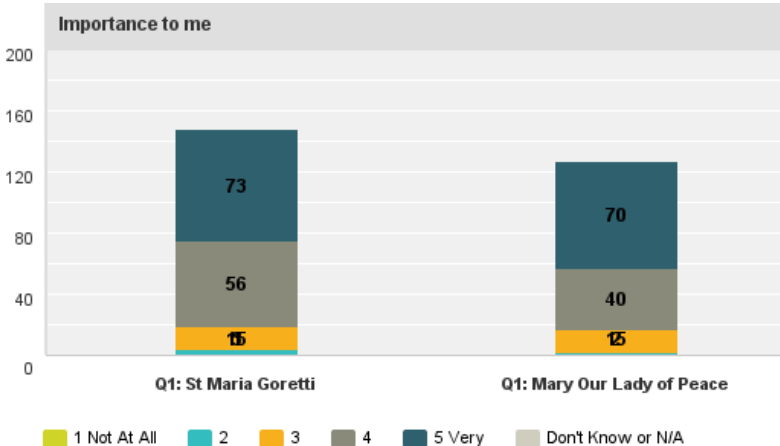
Answered: 280 Skipped: 6



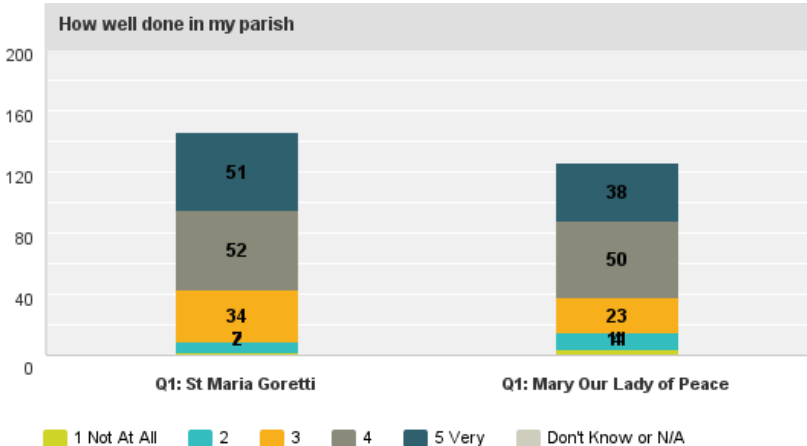
This is the same information from the previous slide, but broken down by age groups.

# Q10: Convenient Mass times

Answered: 278 Skipped: 6



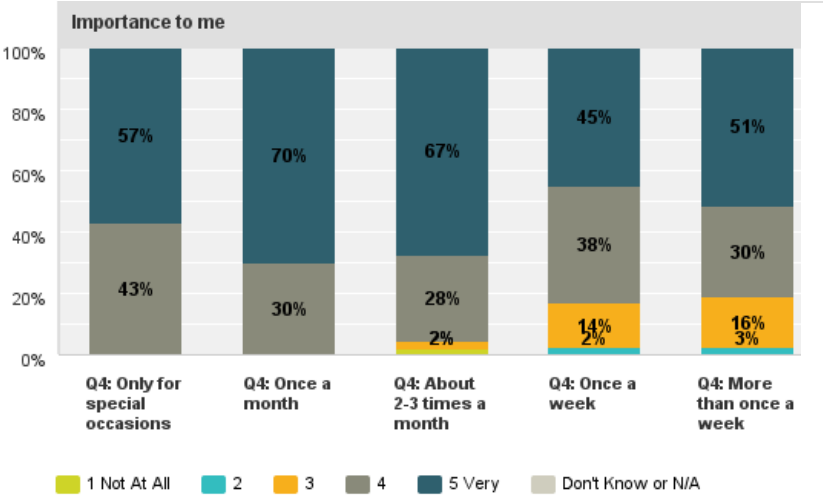
Answered: 278 Skipped: 6



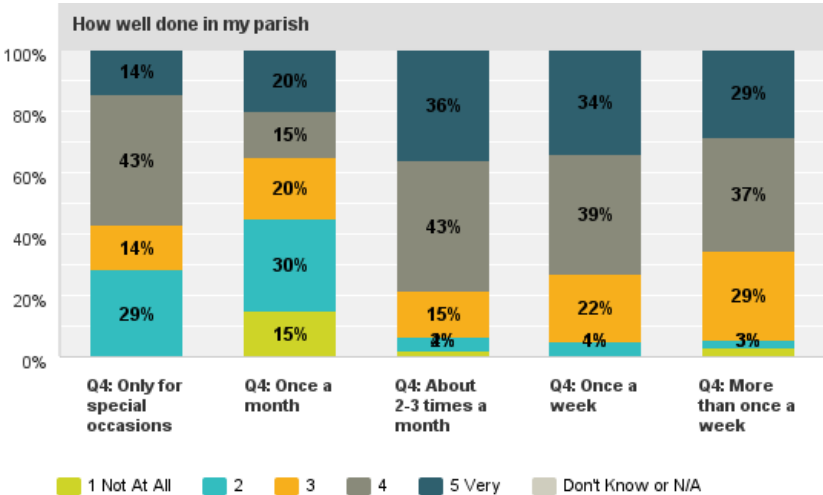


# Q10: Convenient Mass times

Answered: 279 Skipped: 7



Answered: 279 Skipped: 7

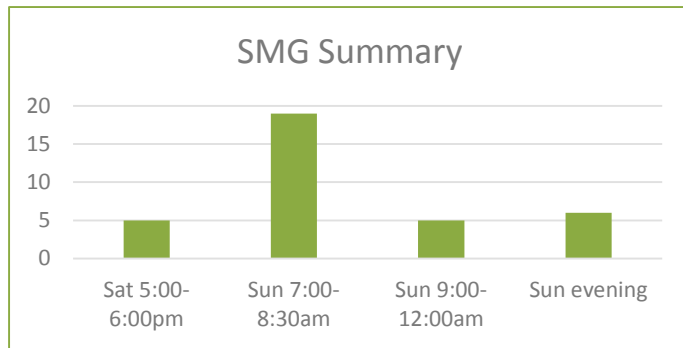


SMG	4	12	22	88	25
MOLP	4	8	25	81	13

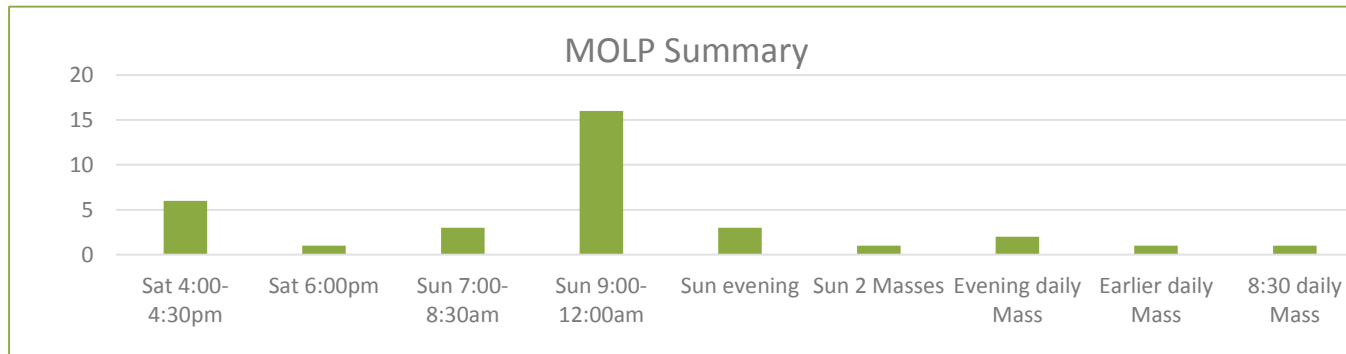
SMG	4	12	22	88	25
MOLP	4	8	25	81	13

Those coming to church less frequently are less satisfied with mass times. This is another possible area for improvement.

## If not convenient, what Mass time would you prefer



SMG = 35 suggestions from 15% of respondents

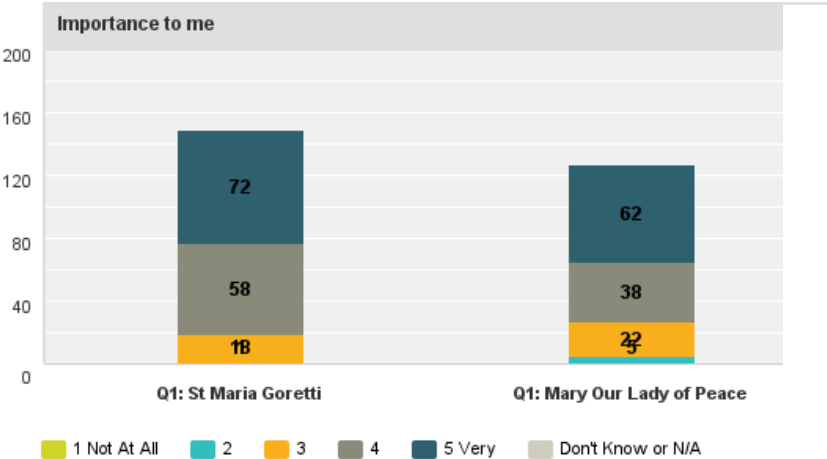


MOLP = 34 suggestions from 11% of respondents

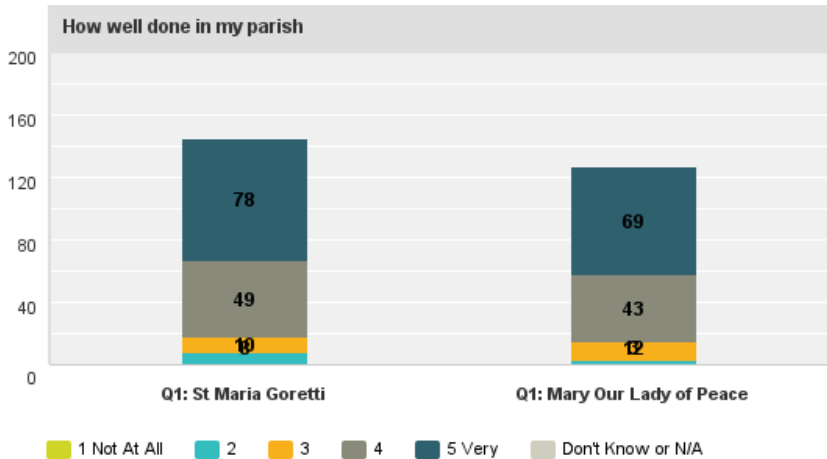
SMG preferred earlier Sunday morning mass times, while MOLOP preferred later mass times. We need to consider leveraging the mass times at both parishes.

# Q11: An interior environment that creates a good atmosphere for worship

Answered: 279 Skipped: 5



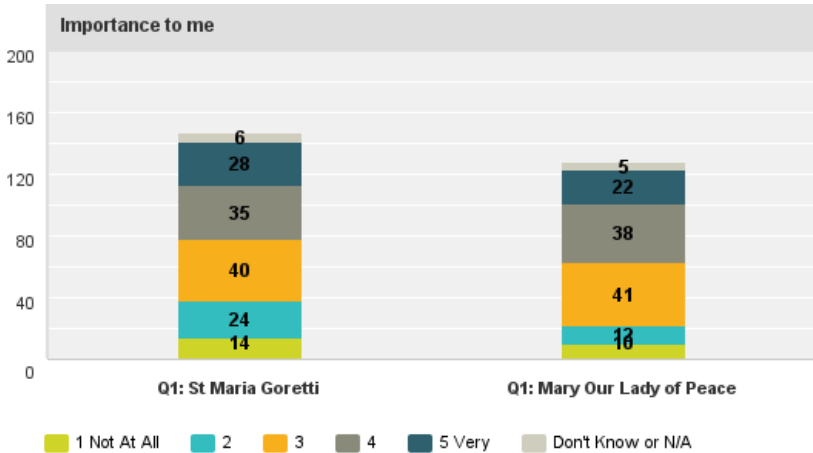
Answered: 279 Skipped: 5



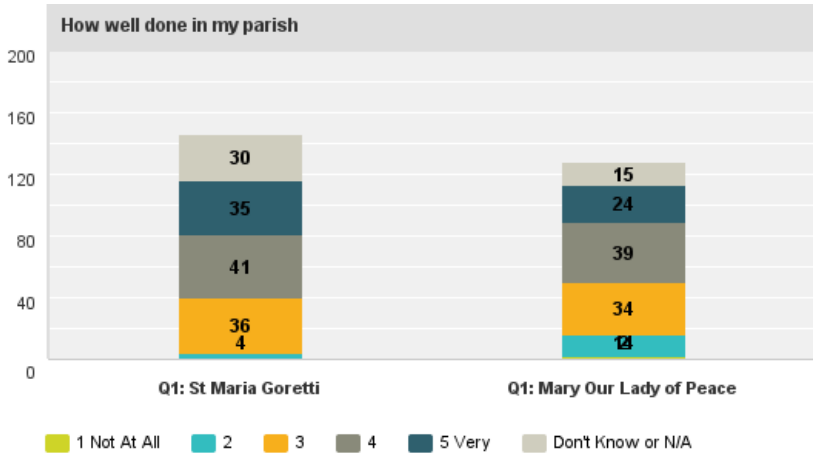
The importance to me is relatively equal to how well it's done.

# Q12: The availability of the Sacrament of Reconciliation (Confession)

Answered: 278 Skipped: 6



Answered: 278 Skipped: 6

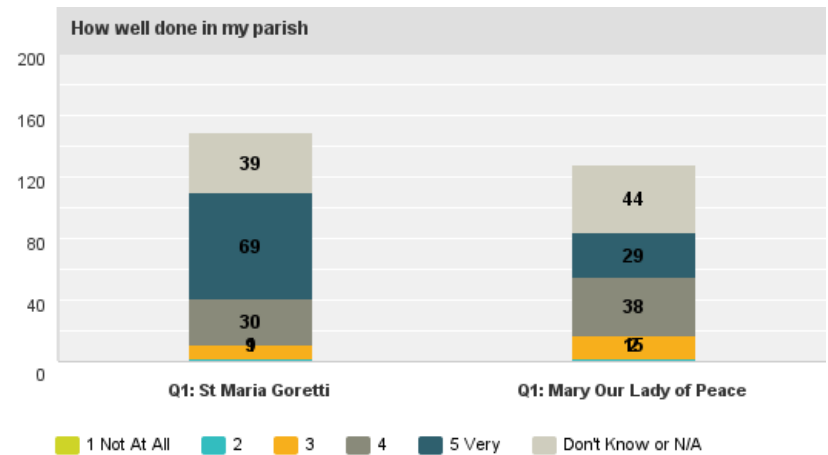
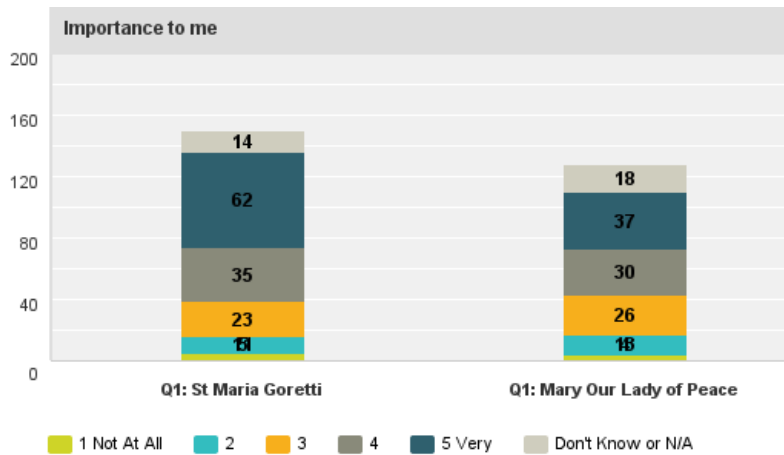


Communication opportunity.

# Q13: The availability of the Sacrament of Anointing the Sick

Answered: 280 Skipped: 4

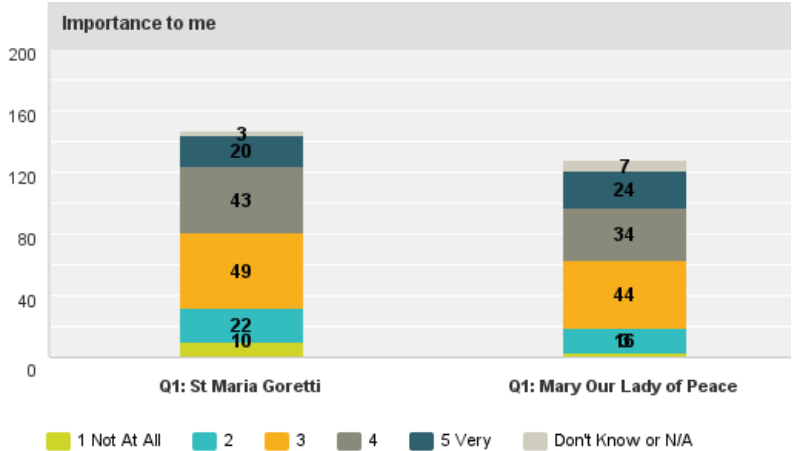
Answered: 280 Skipped: 4



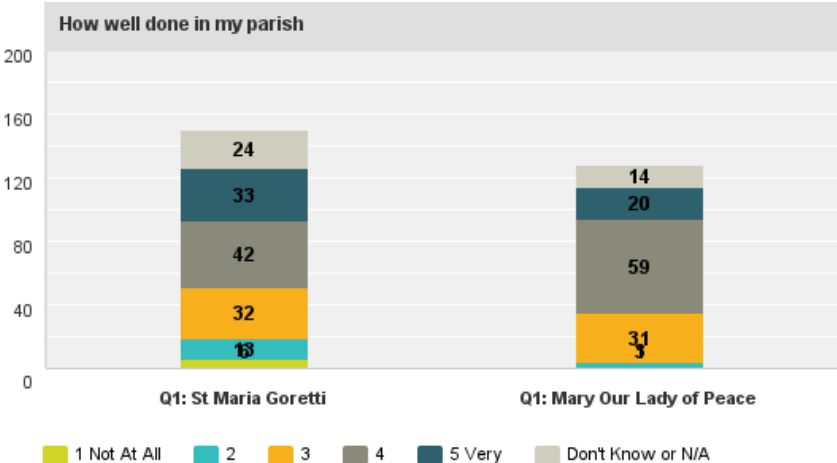
Another possible communication opportunity. We need to communicate what anointing of the sick is, who may benefit and who to contact, if necessary.

# Q14: Devotional services (Rosary, Stations, Evening Prayer, etc.)

Answered: 279 Skipped: 5



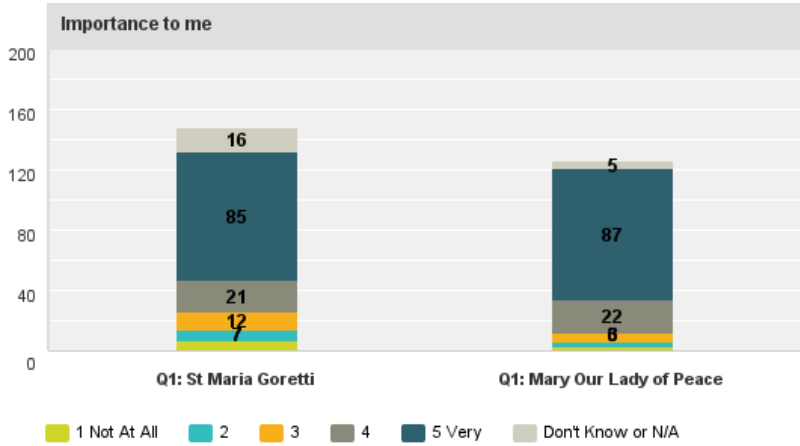
Answered: 279 Skipped: 5



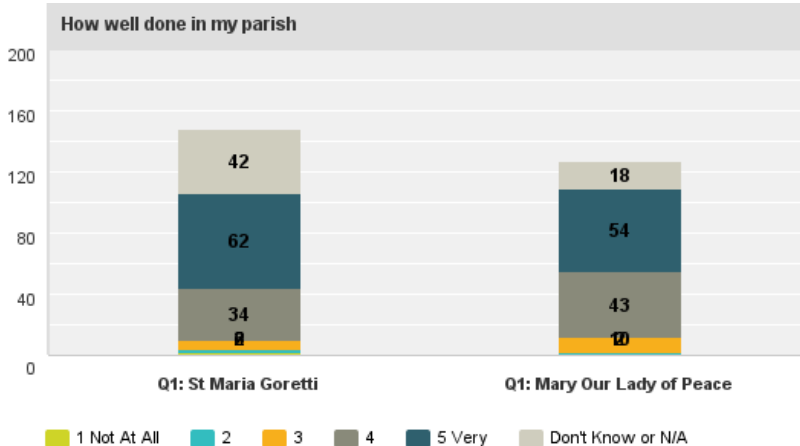
Fairly balanced between the importance and how well done.

# Q15: Religious education for children

Answered: 279 Skipped: 5



Answered: 279 Skipped: 5

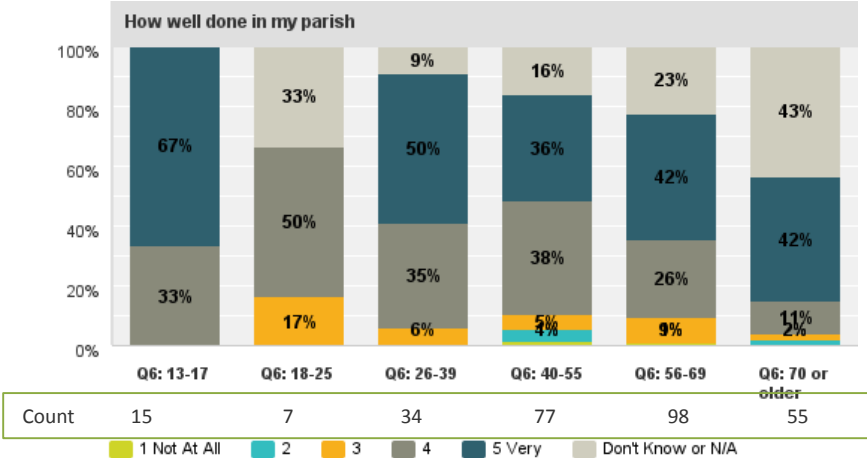
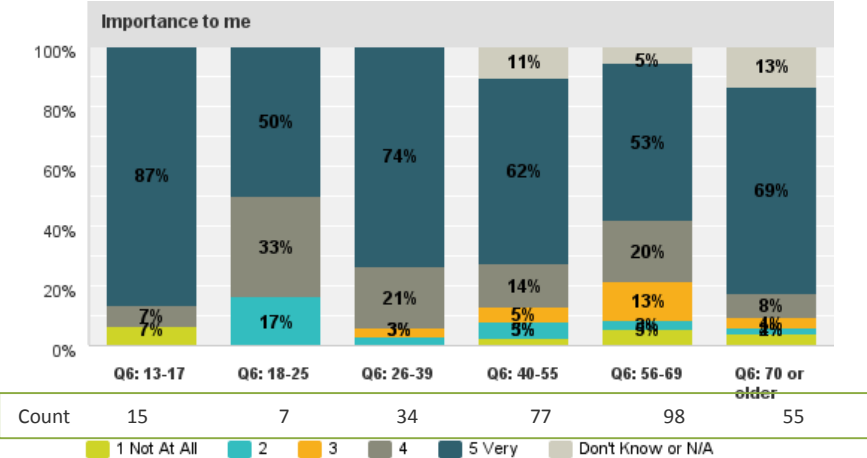


Fairly balanced.

# Q15: Religious education for children

Answered: 281 Skipped: 5

Answered: 281 Skipped: 5

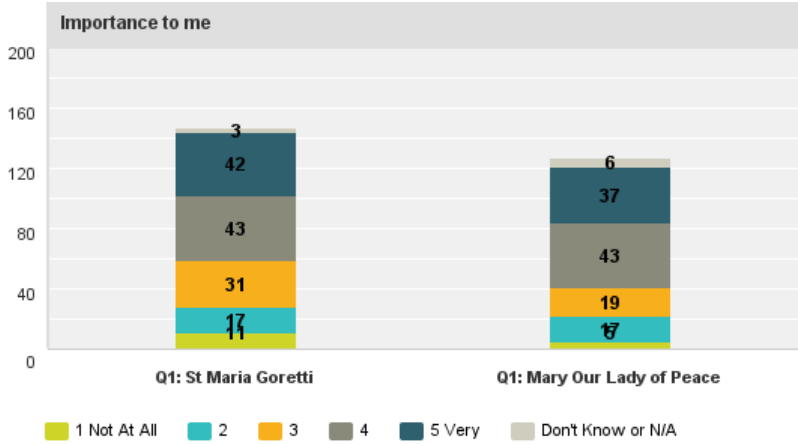


Those receiving the training rated the religious ed program quite high.  
This is a testament to the program.

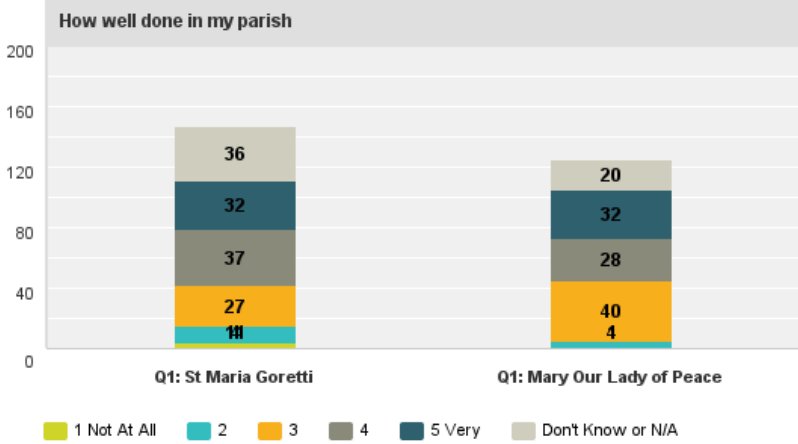


# Q16: Religious education for adults

Answered: 278 Skipped: 6



Answered: 278 Skipped: 6

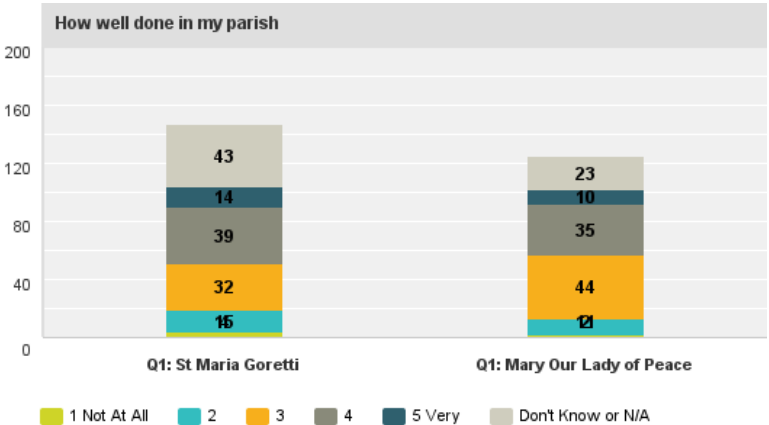
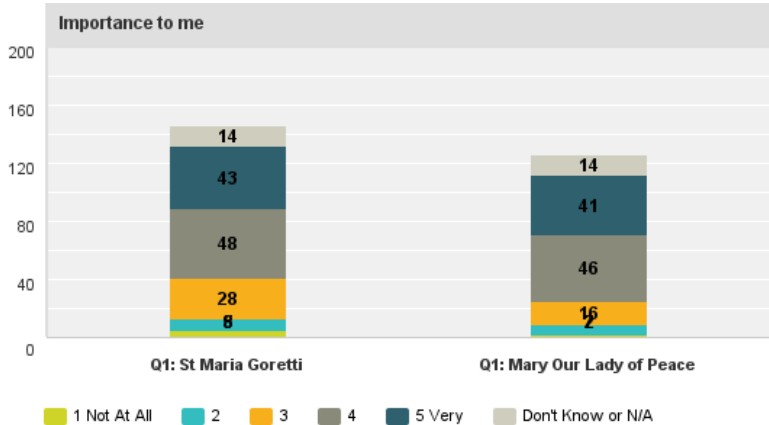


Distribution of those that feel this is important to them is balanced with how well it's done.

# Q17: Programs that strengthen and foster family life

Answered: 275 Skipped: 9

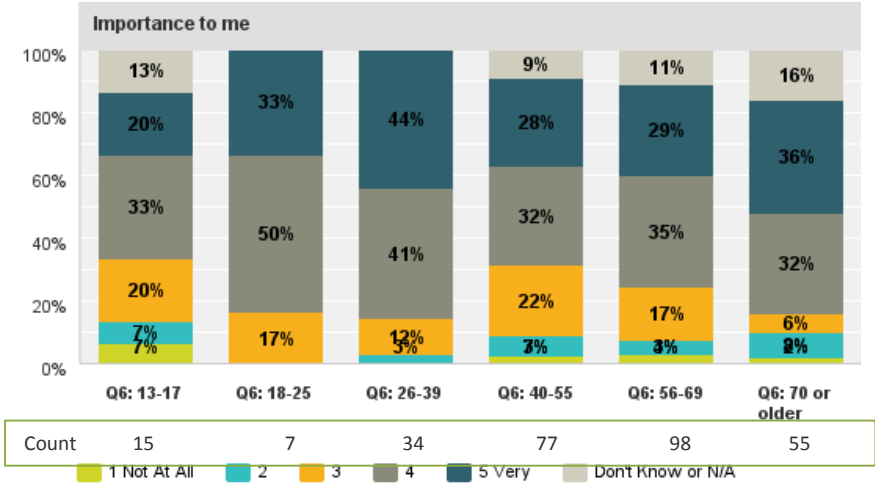
Answered: 275 Skipped: 9



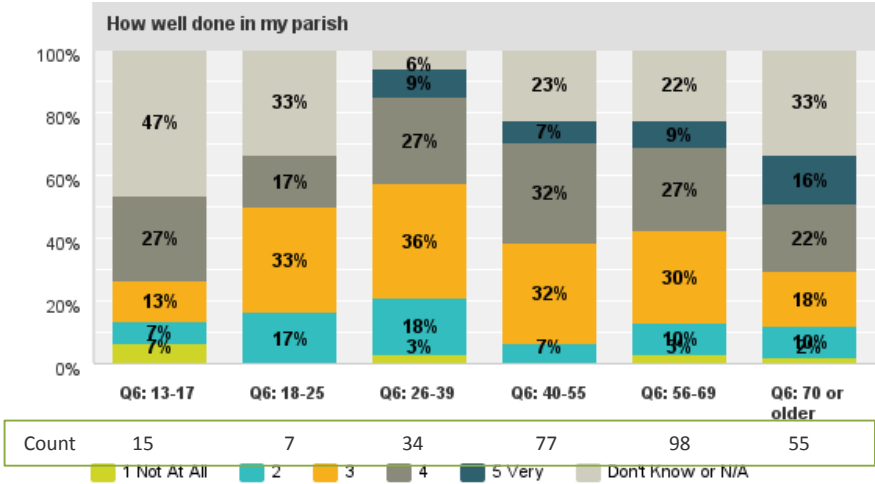
This is an area for improvement.

# Q17: Programs that strengthen and foster family life

Answered: 277 Skipped: 9



Answered: 277 Skipped: 9

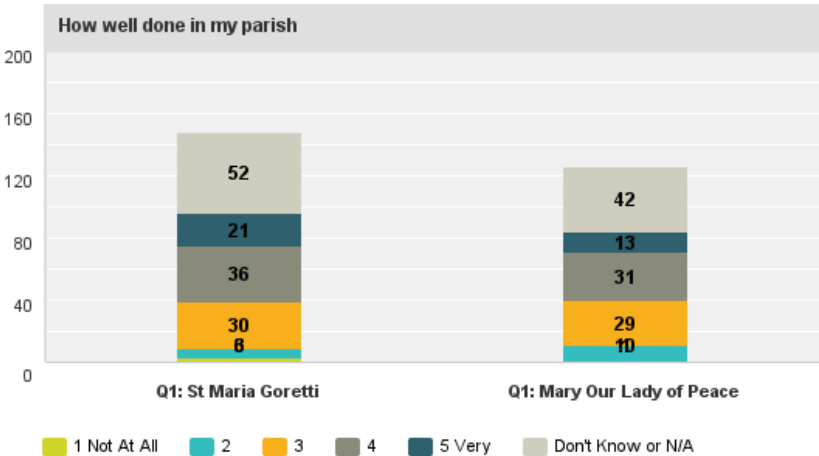
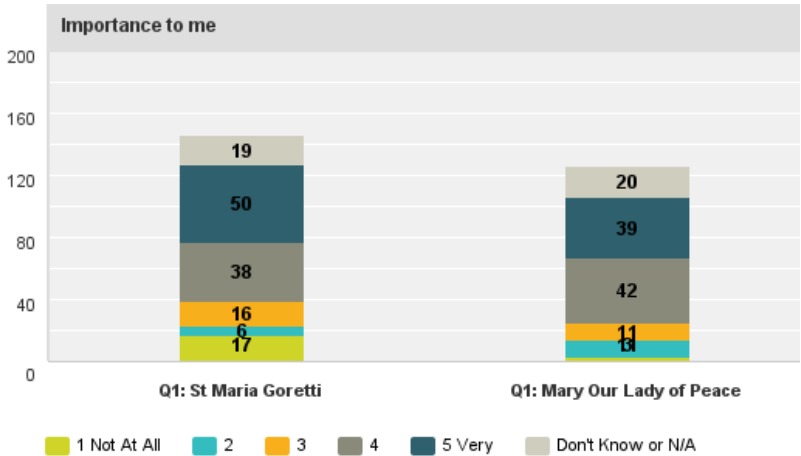


Same data from the previous slide.

# Q18: Youth ministry programs for teens

Answered: 278 Skipped: 6

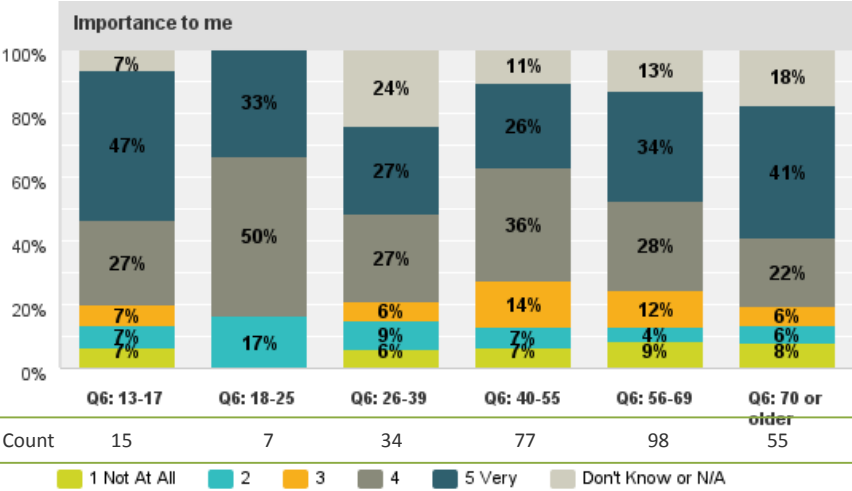
Answered: 278 Skipped: 6



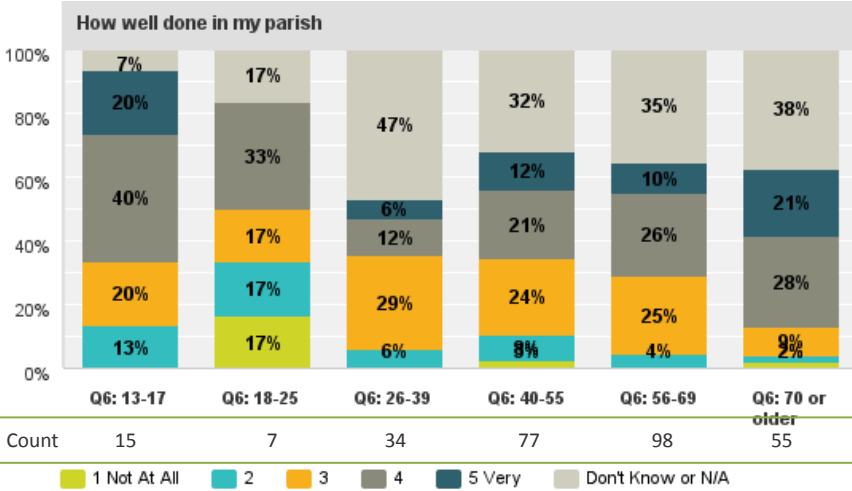
Here is an improvement opportunity.

# Q18: Youth ministry programs for teens

Answered: 280 Skipped: 6



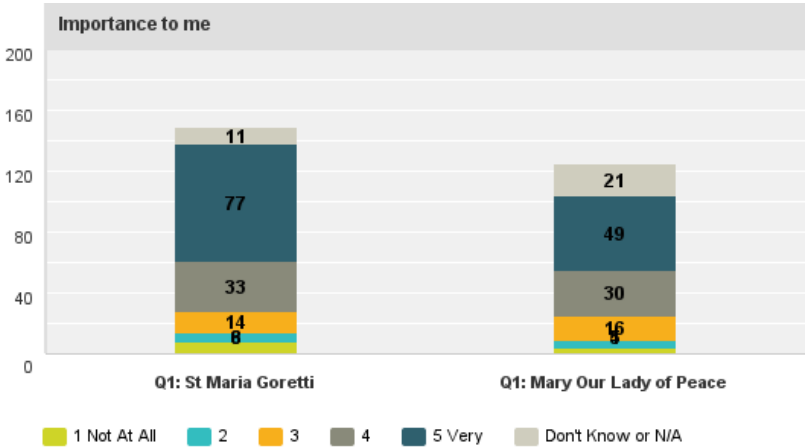
Answered: 280 Skipped: 6



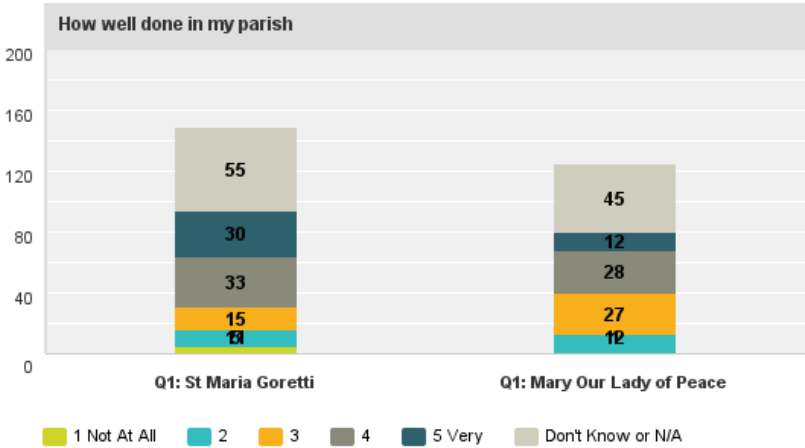
Same data from the previous slide. An improvement opportunity.

# Q19: Welcome people who are divorced, separated or single parents

Answered: 277 Skipped: 7



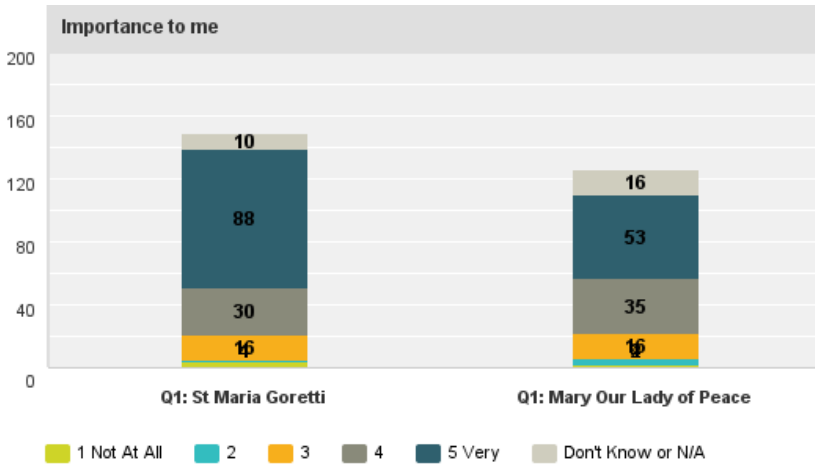
Answered: 277 Skipped: 7



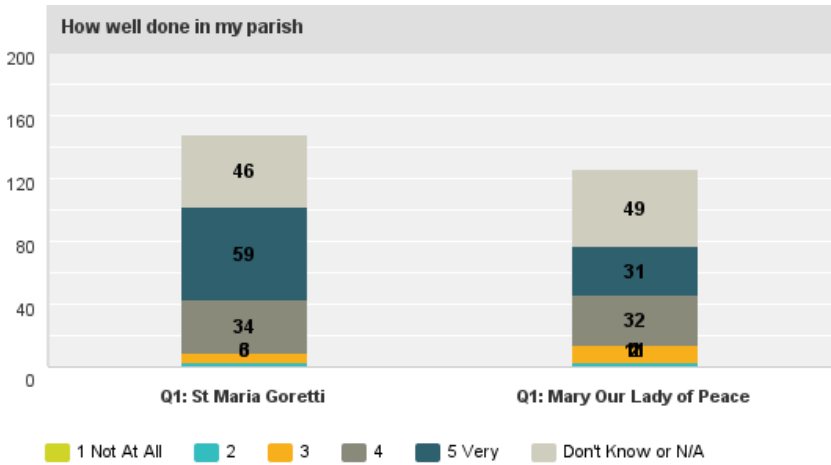
This is important concept, but not done or communicated well. This is an area for improvement.

# Q20: Attention to the spiritual and sacramental needs of the sick and shut-in

Answered: 278 Skipped: 6



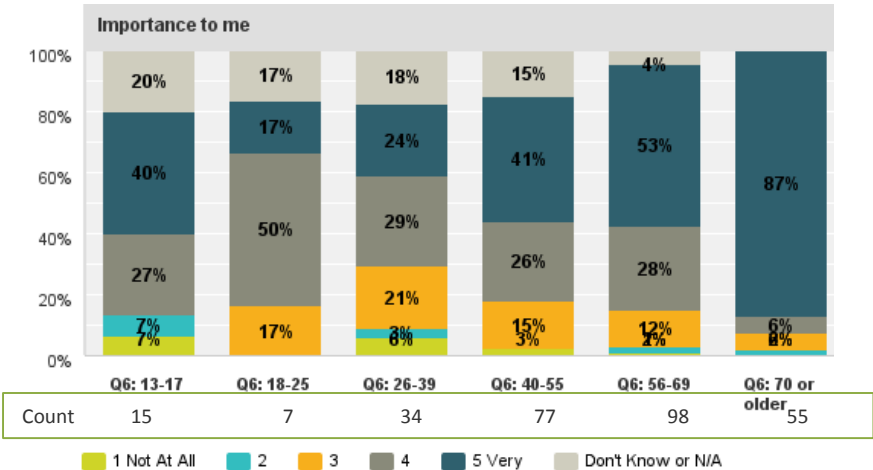
Answered: 278 Skipped: 6



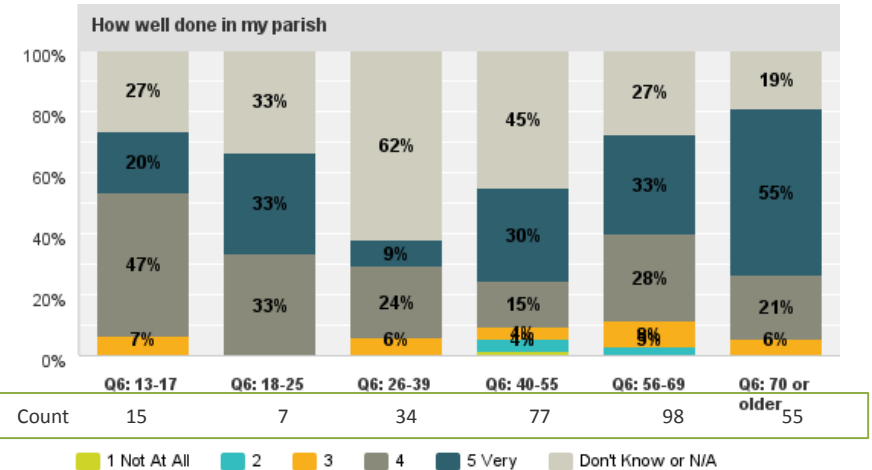
This is a communication opportunity.

# Q20: Attention to the spiritual and sacramental needs of the sick and shut-in

Answered: 280 Skipped: 6



Answered: 280 Skipped: 6

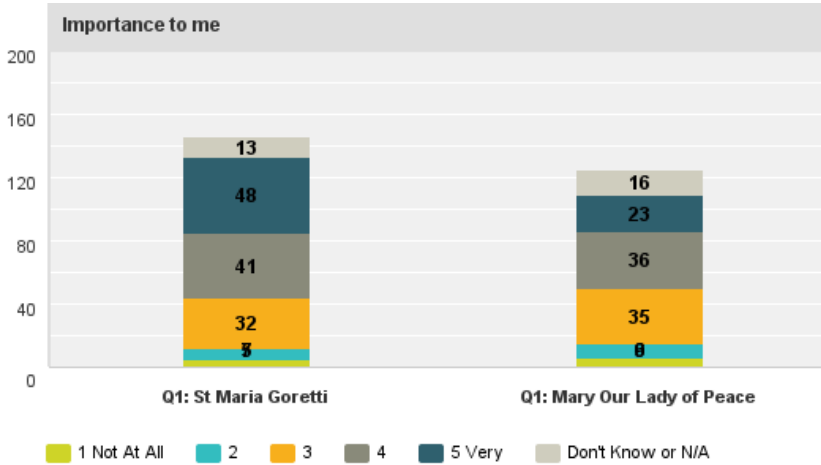


Same data from the previous slide.

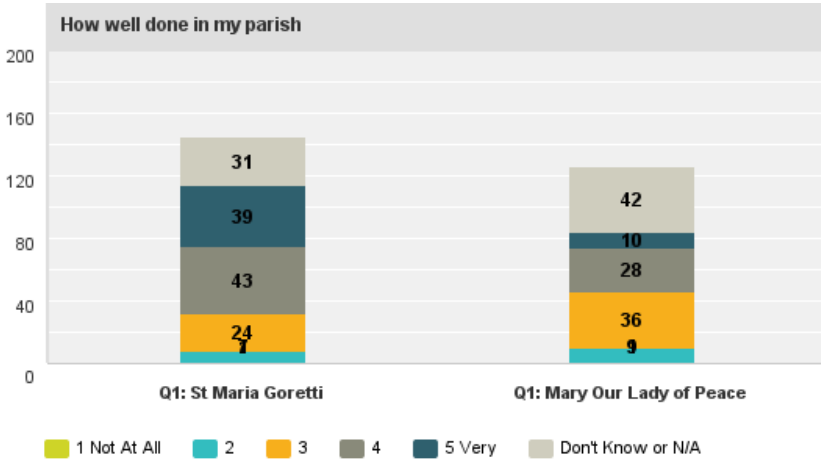


# Q21: Encouragement of parish members to work for social justice

Answered: 275 Skipped: 9



Answered: 275 Skipped: 9

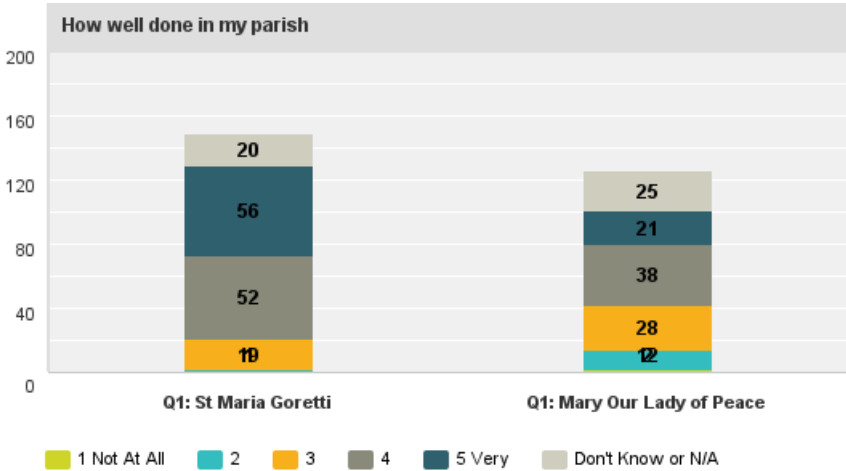
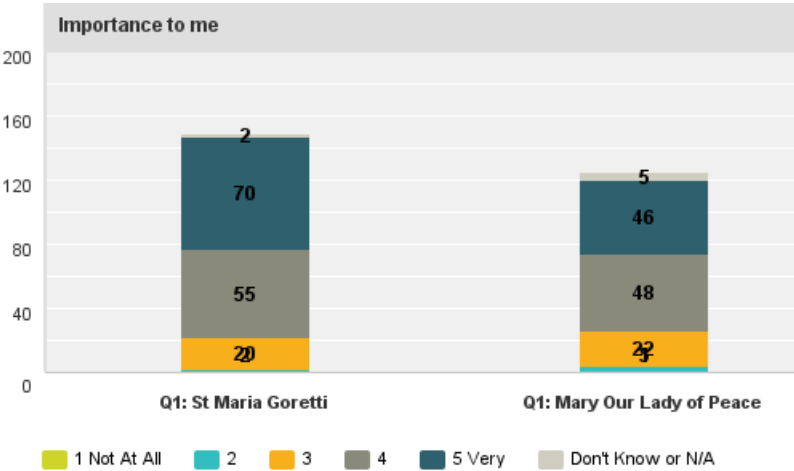


Another communication opportunity.

# Q22: Outreach to the poor

Answered: 278 Skipped: 6

Answered: 278 Skipped: 6

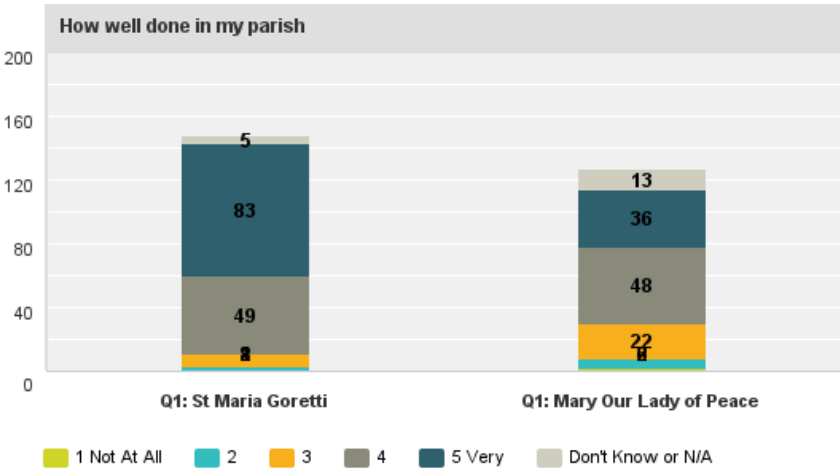
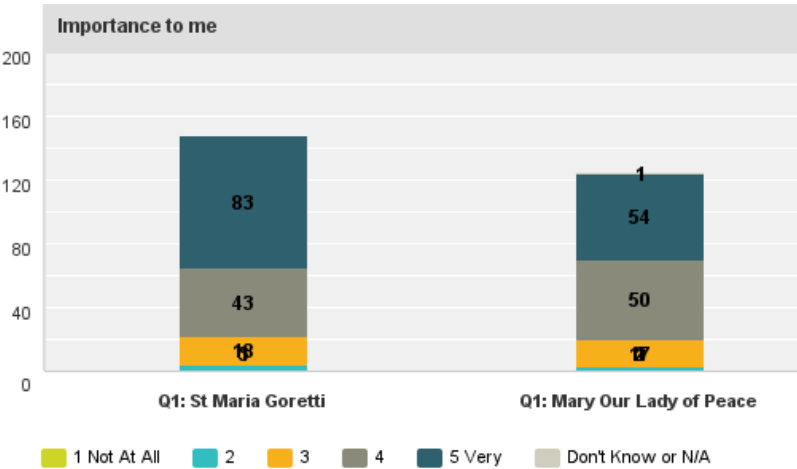


An opportunity for more improvement.

# Q23: Cooperation with groups in the community to meet local needs (food pantry, blood drives, etc.)

Answered: 277 Skipped: 7

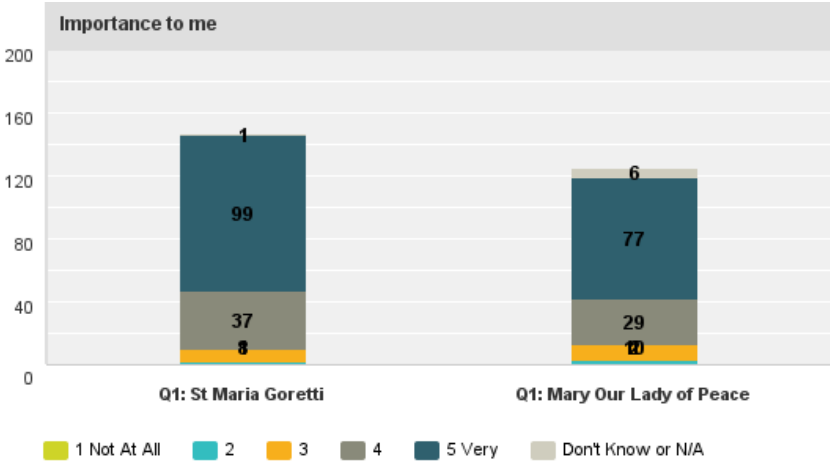
Answered: 277 Skipped: 7



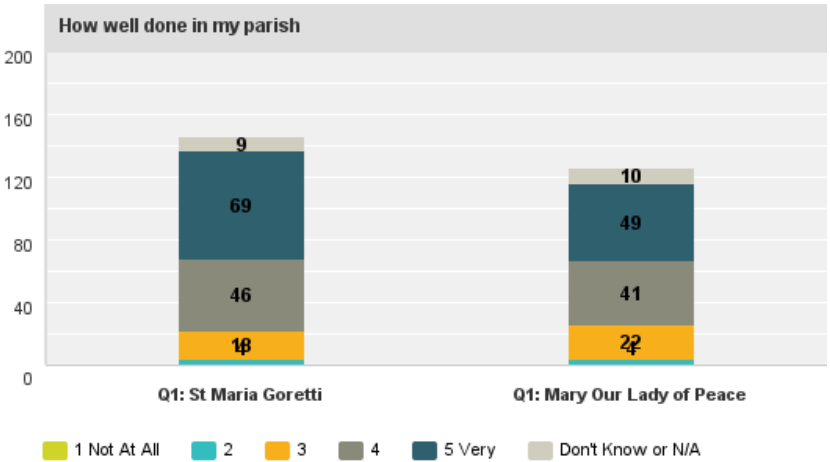
This is well done in both parishes.

# Q24: Promotion of respect for human life

Answered: 275 Skipped: 9



Answered: 275 Skipped: 9

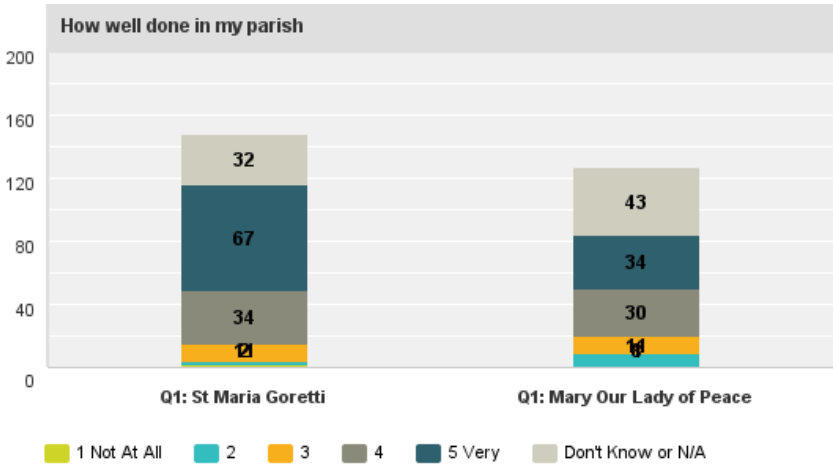
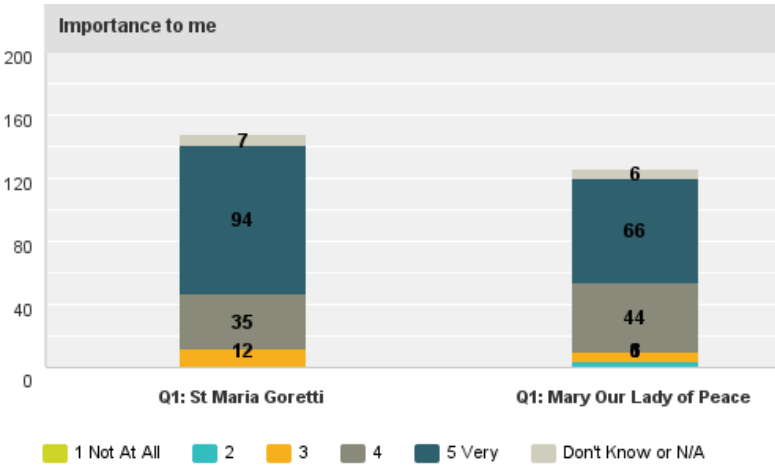


Another strength of both parishes.

# Q25: Support for families who have experienced death

Answered: 278 Skipped: 6

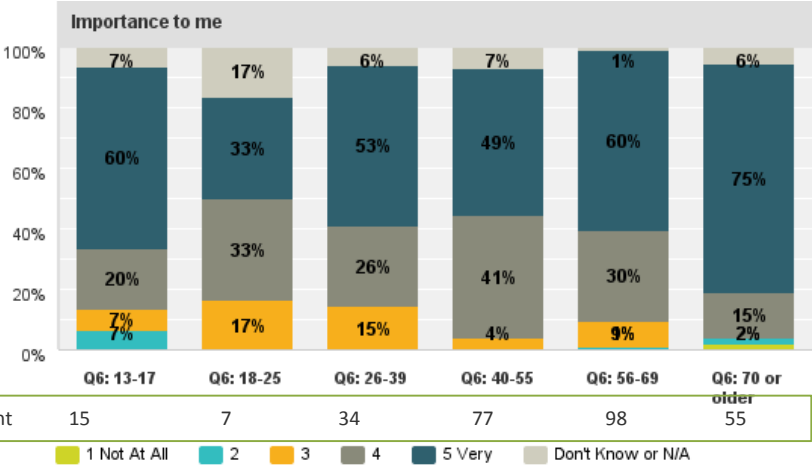
Answered: 278 Skipped: 6



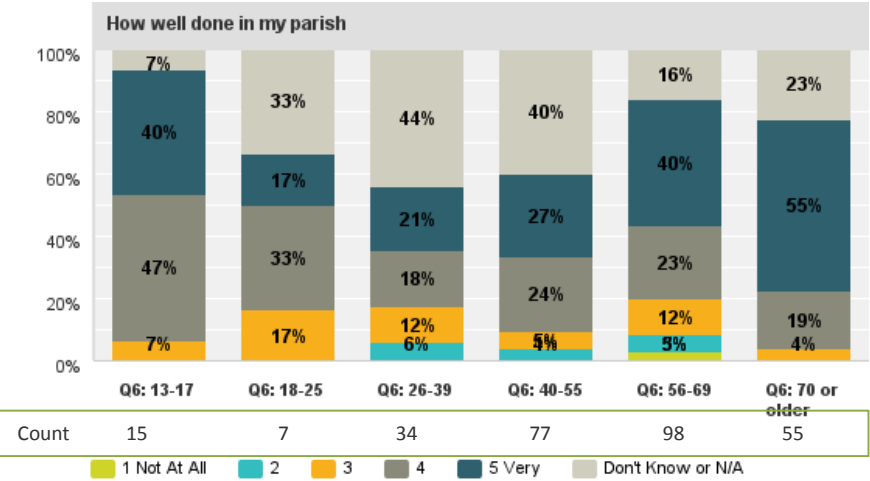
Communication opportunity.

# Q25: Support for families who have experienced death

Answered: 280 Skipped: 6



Answered: 280 Skipped: 6

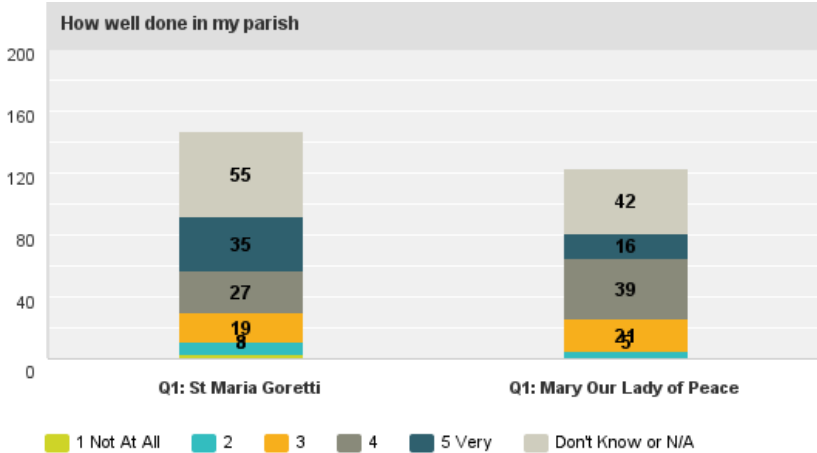
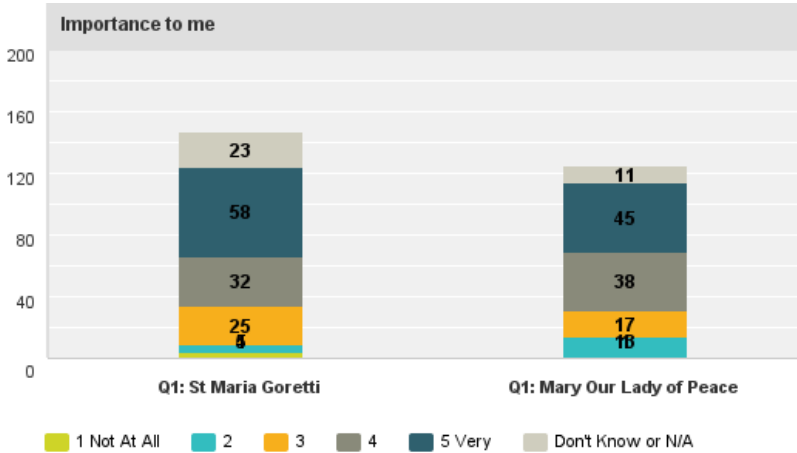


Same data from the previous slide.

# Q26: The Rite of Christian Initiation for Adults

Answered: 275 Skipped: 9

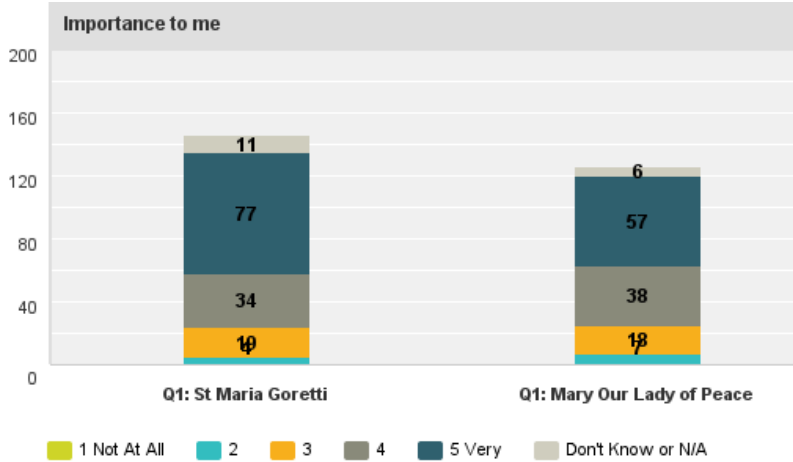
Answered: 275 Skipped: 9



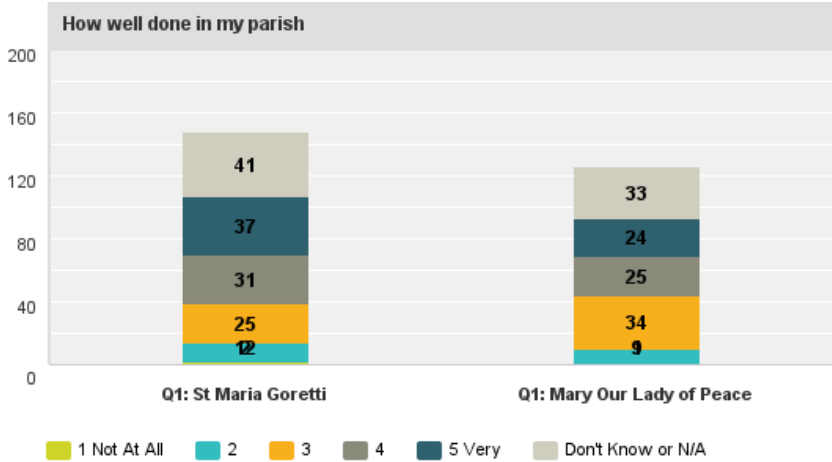
Am area for improvement for both parishes.

# Q27: A spirit of welcome and invitation for those interested in becoming Catholic

Answered: 275 Skipped: 9



Answered: 275 Skipped: 9

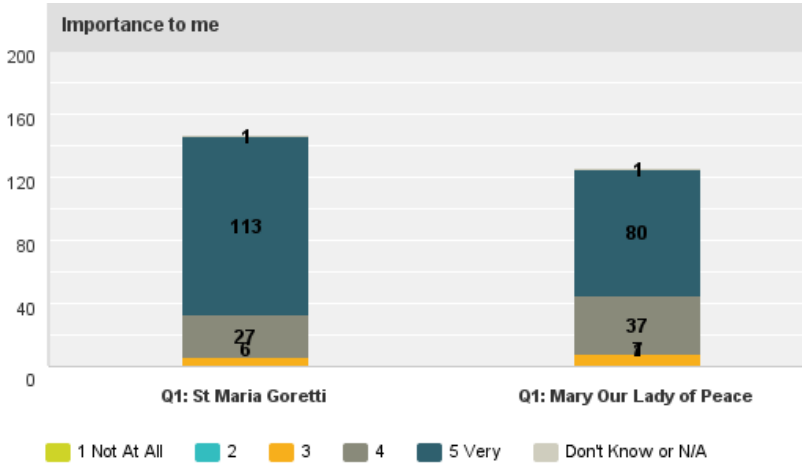


An opportunity for improvement.

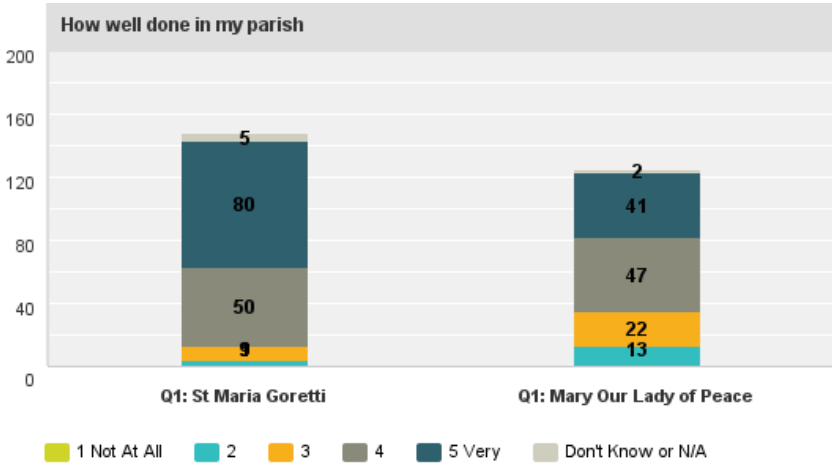


# Q28: The parish exhibiting a spirit of warmth and hospitality

Answered: 276 Skipped: 8



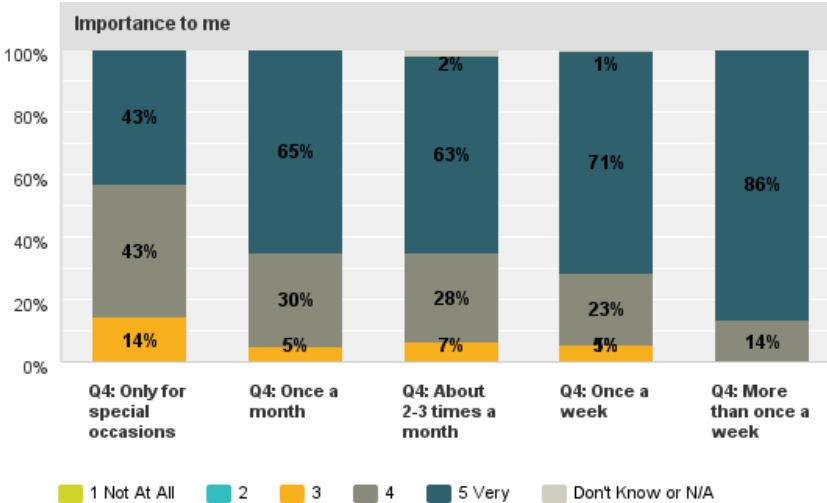
Answered: 276 Skipped: 8



A strength for both parishes.

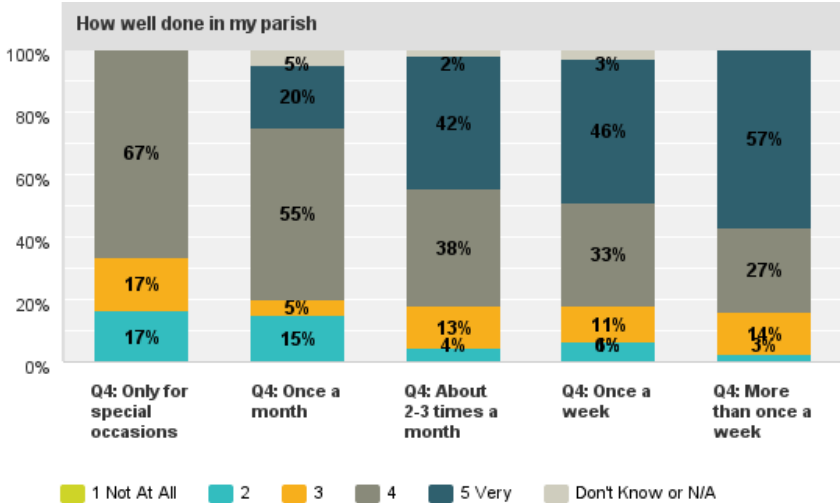
# Q28: The parish exhibiting a spirit of warmth and hospitality

Answered: 277 Skipped: 9



SMG	4	12	22	88	25
MOLP	4	8	25	81	13

Answered: 277 Skipped: 9

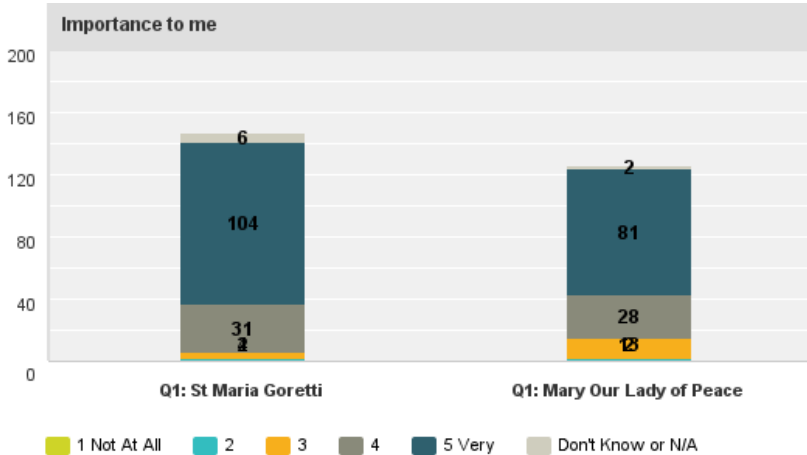


SMG	4	12	22	88	25
MOLP	4	8	25	81	13

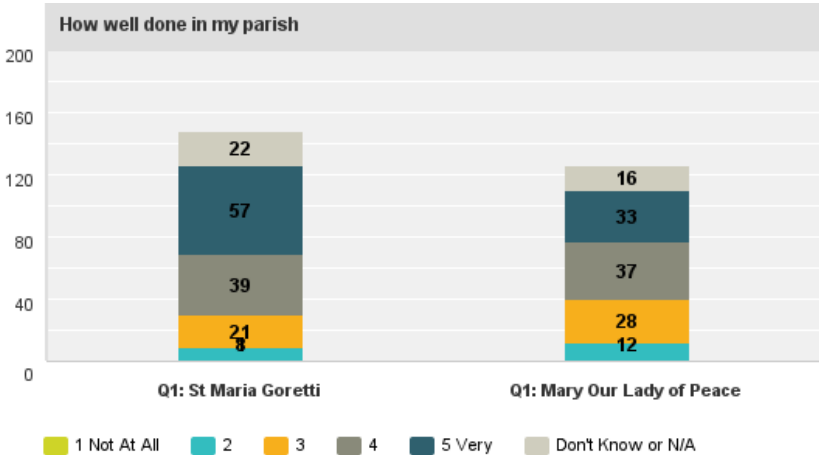
Same data from the previous slide. Higher mass attendance is correlated with feelings of warmth and hospitality

# Q29: New members of the parish are welcomed

Answered: 276 Skipped: 8



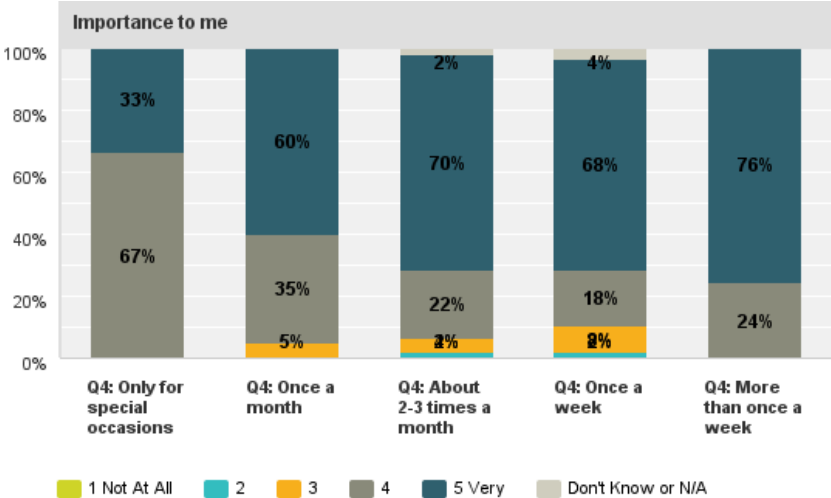
Answered: 276 Skipped: 8



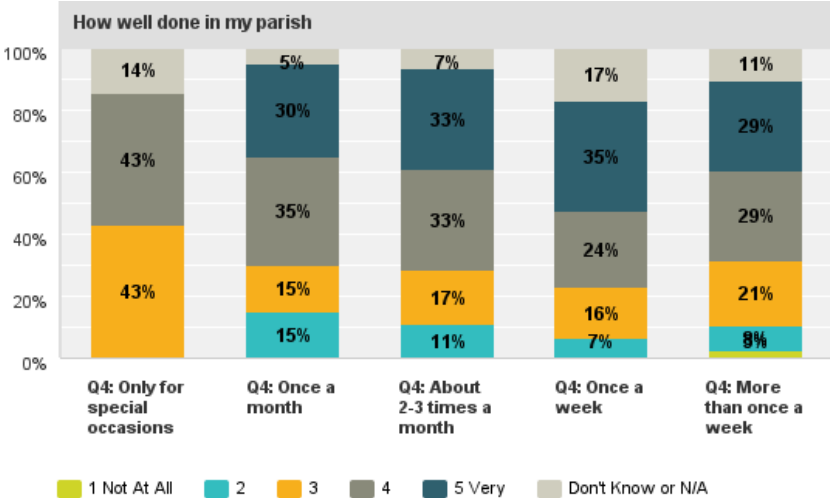
Opportunity for improvement.

# Q29: New members of the parish are welcomed

Answered: 277 Skipped: 9



Answered: 277 Skipped: 9



SMG	4	12	22	88	25
MOLP	4	8	25	81	13

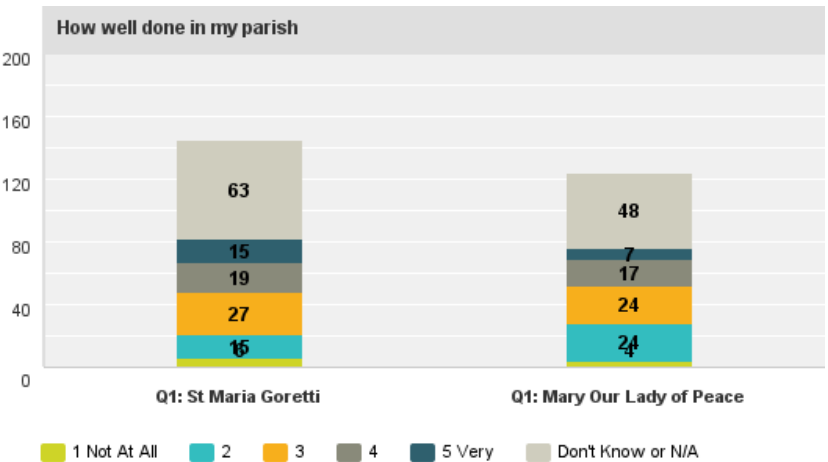
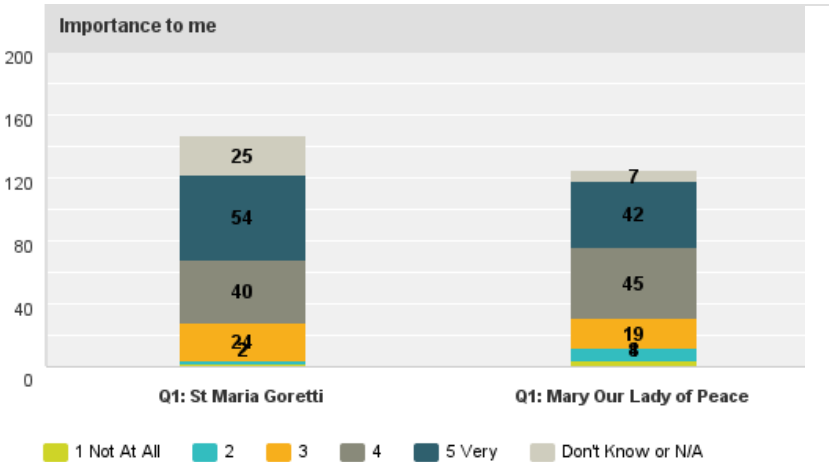
SMG	4	12	22	88	25
MOLP	4	8	25	81	13

Same data from the previous slide.

# Q30: Outreach to non-practicing Catholics

Answered: 274 Skipped: 10

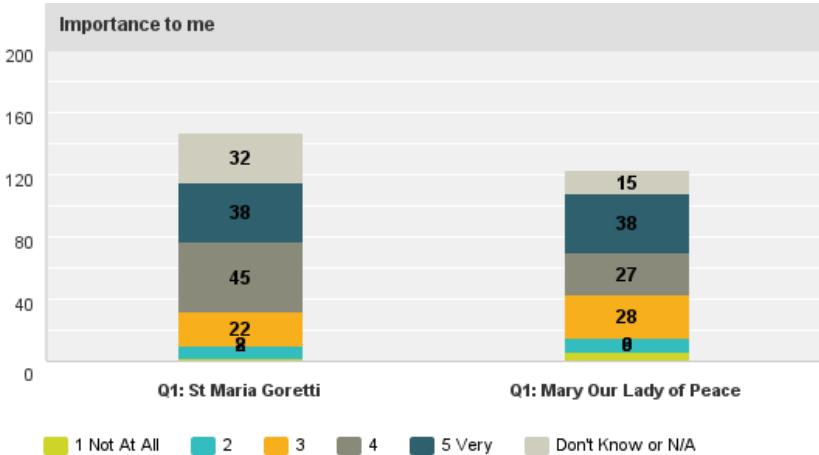
Answered: 274 Skipped: 10



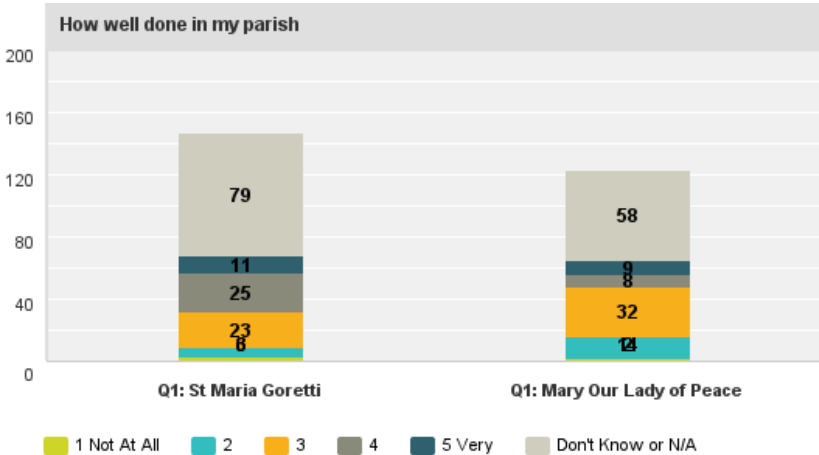
An opportunity for improvement.

# Q31: Support to religious diversity within families

Answered: 273 Skipped: 11



Answered: 273 Skipped: 11

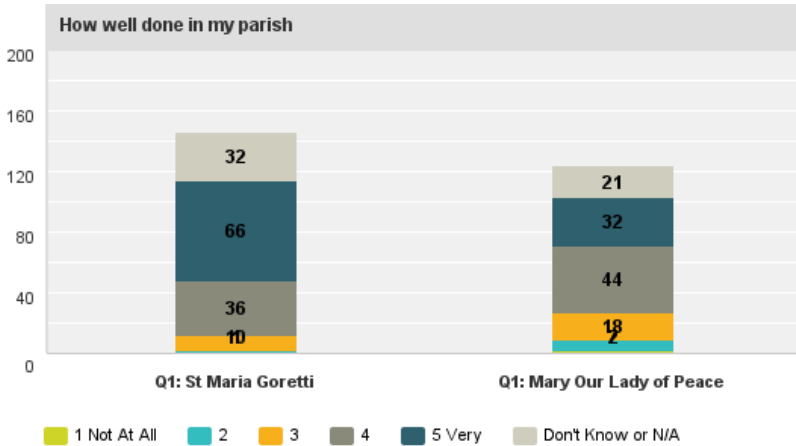
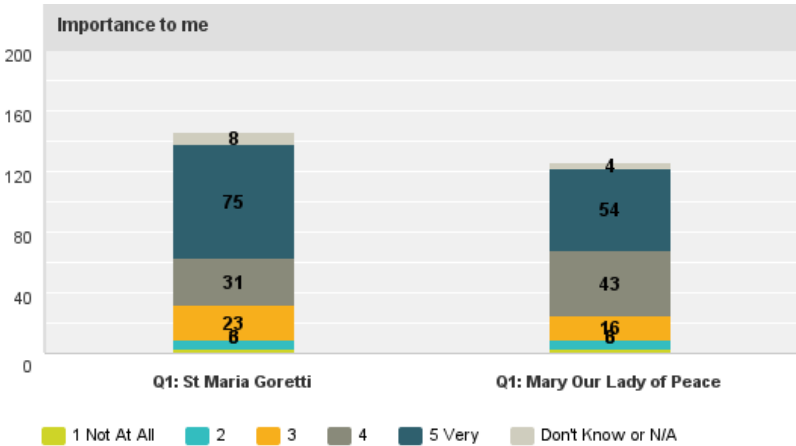


Opportunity for improvement.

# Q32: Cooperation with other Christian churches

Answered: 274 Skipped: 10

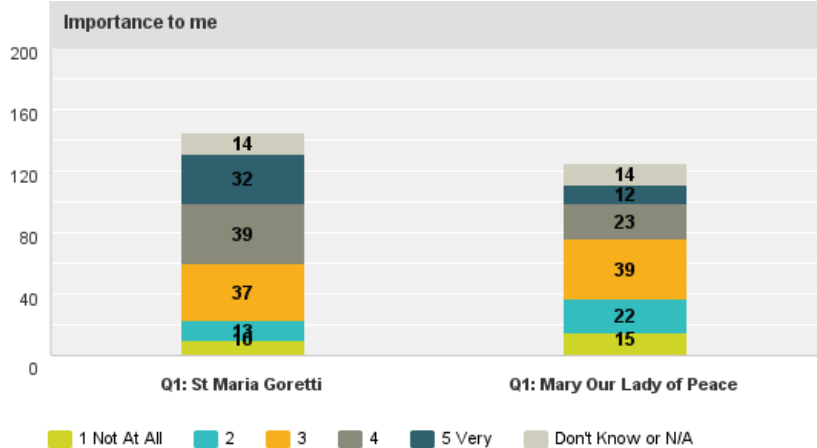
Answered: 274 Skipped: 10



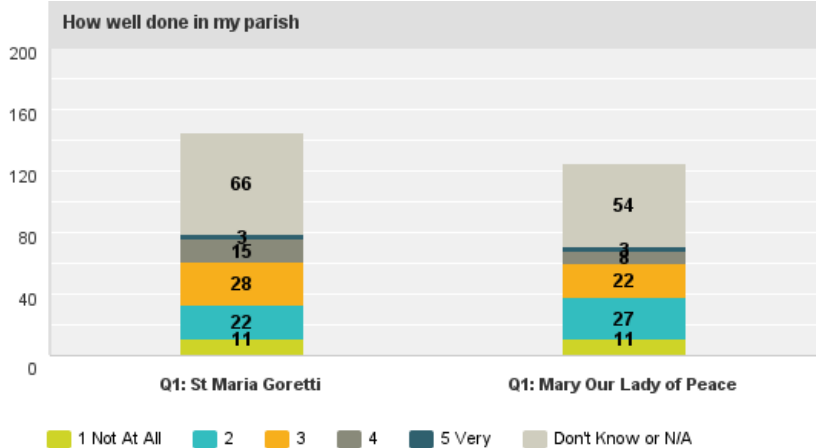
An opportunity for improvement.

# Q33: An understanding of major world religions (Islam, Hinduism, Buddhism, Judaism)

Answered: 273 Skipped: 11



Answered: 273 Skipped: 11

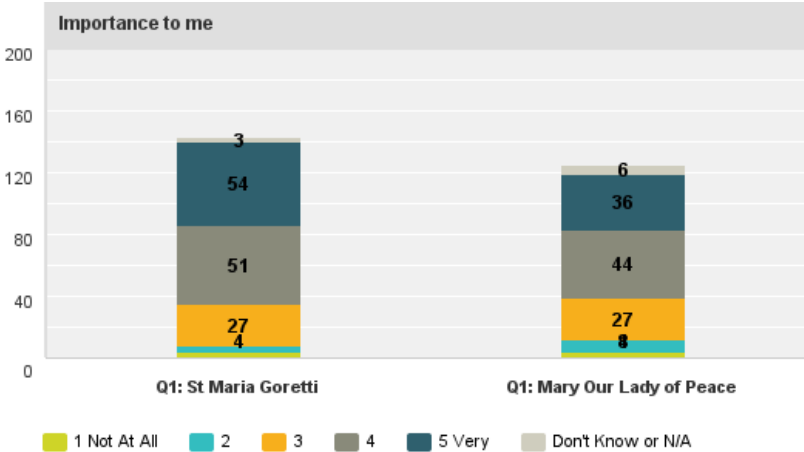


Communication opportunity.

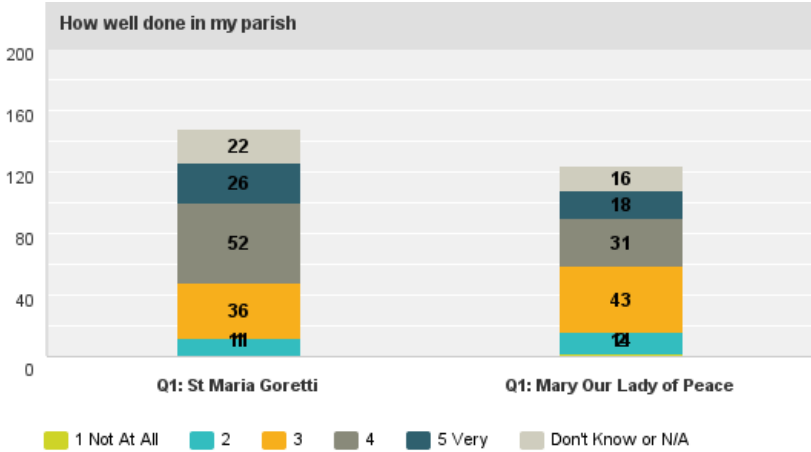


# Q34: Encouragement of members to share the responsibility of leadership

Answered: 273 Skipped: 11



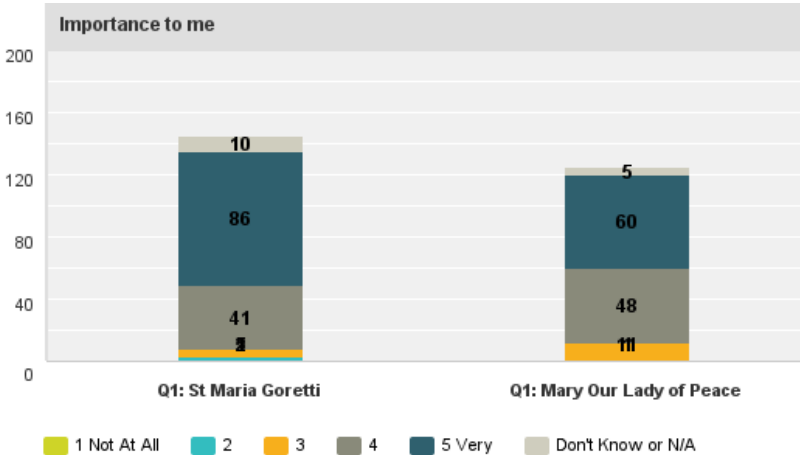
Answered: 273 Skipped: 11



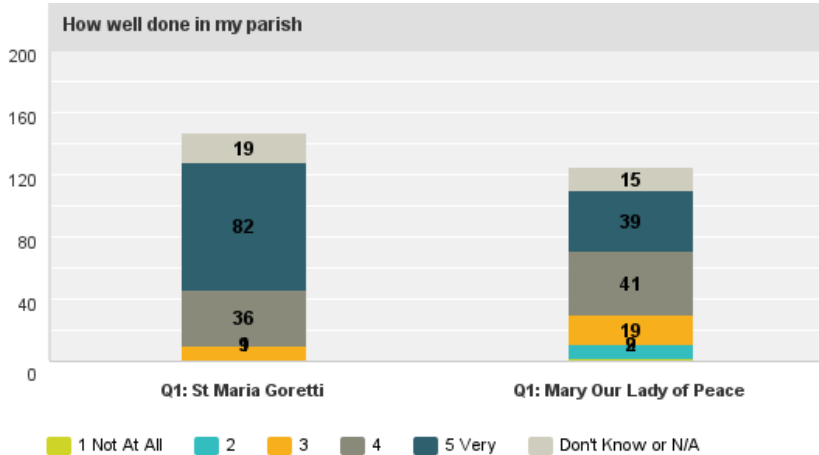
Growth opportunity.

# Q35: Ease in obtaining help and answers when calling the parish

Answered: 272 Skipped: 12



Answered: 272 Skipped: 12

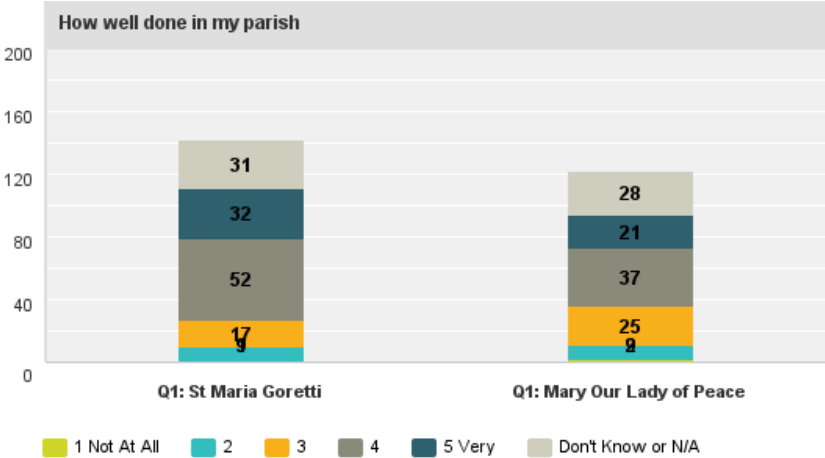
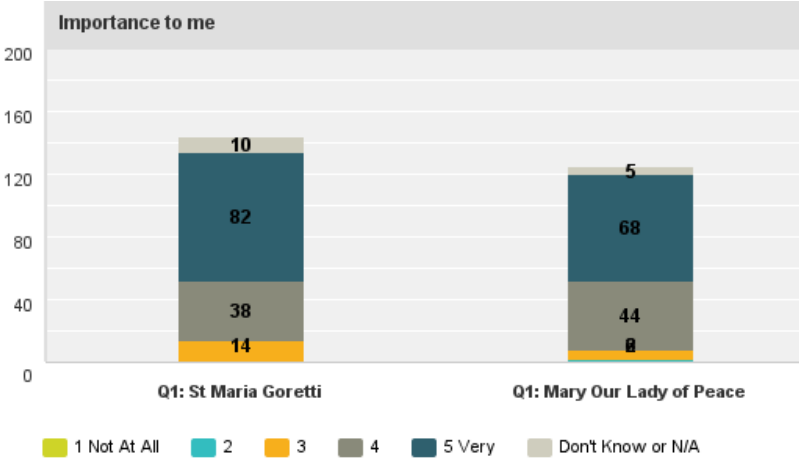


Strength for both parishes.

# Q36: Parish leadership that listens to the concerns of parishioners

Answered: 272 Skipped: 12

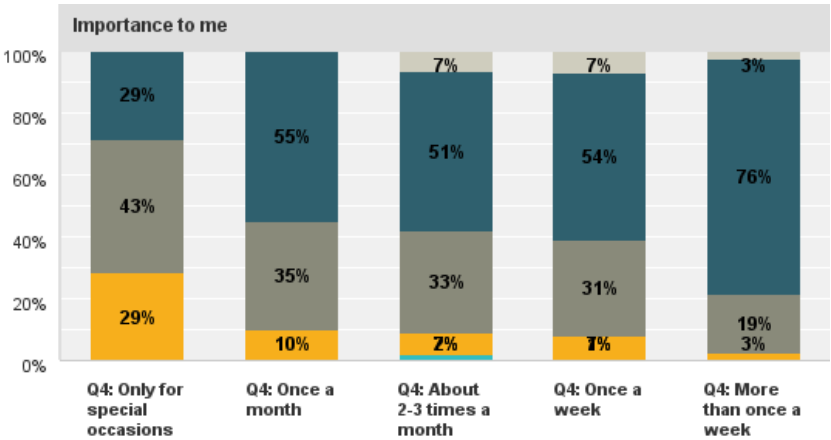
Answered: 272 Skipped: 12



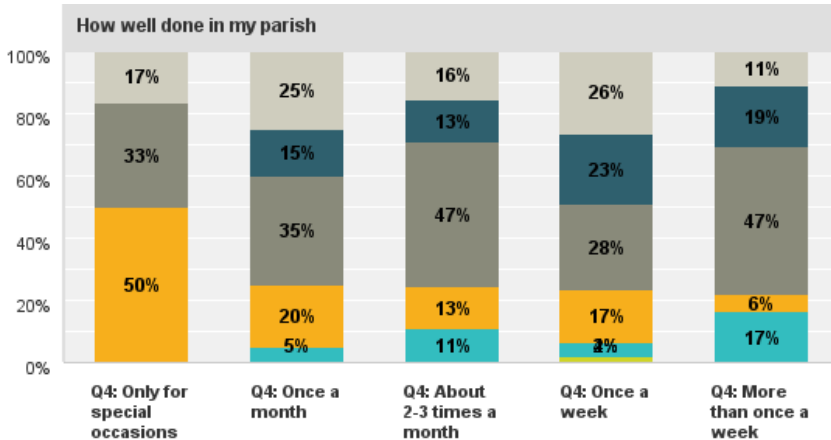
Opportunity for both parishes.

# Q36: Parish leadership that listens to the concerns of parishioners

Answered: 274 Skipped: 12



Answered: 274 Skipped: 12



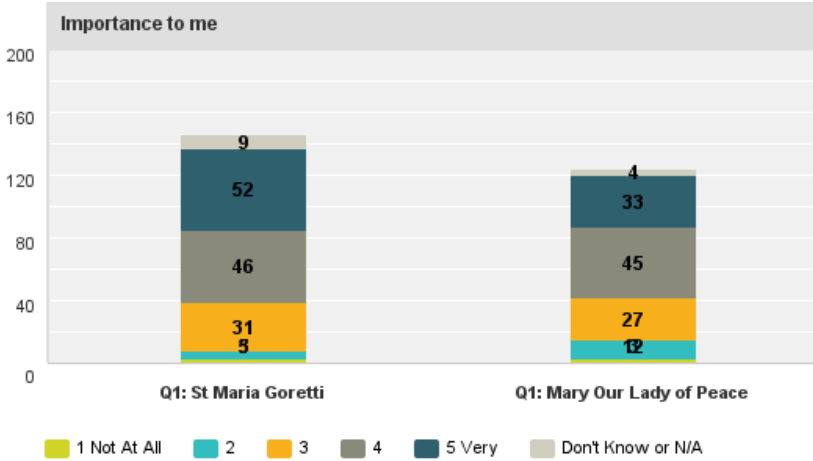
	1 Not At All	2	3	4	5 Very	Don't Know or N/A
SMG	4	12	22	88	25	
MOLP	4	8	25	81	13	

	1 Not At All	2	3	4	5 Very	Don't Know or N/A
SMG	4	12	22	88	25	
MOLP	4	8	25	81	13	

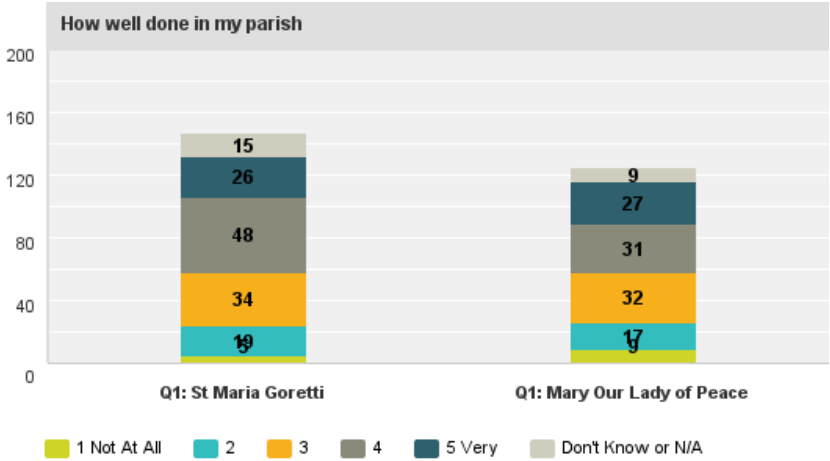
Same data from the previous slide.

# Q37: My parish shares enough financial information for me to understand what my financial contribution should be

Answered: 273 Skipped: 11



Answered: 273 Skipped: 11

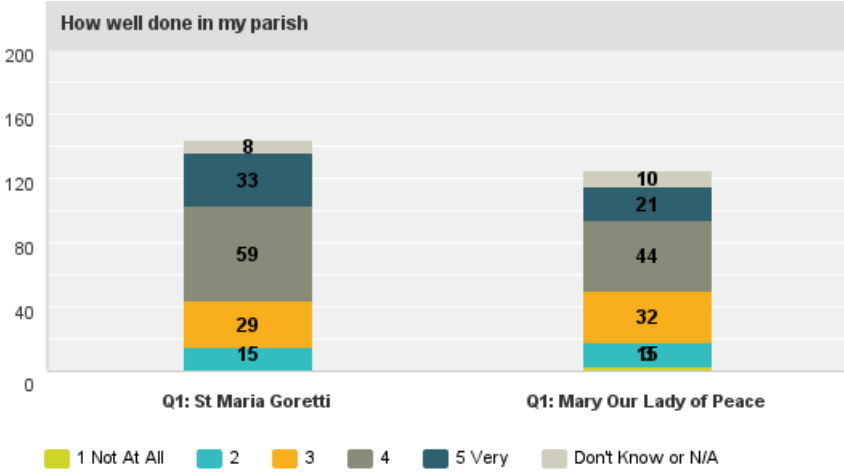
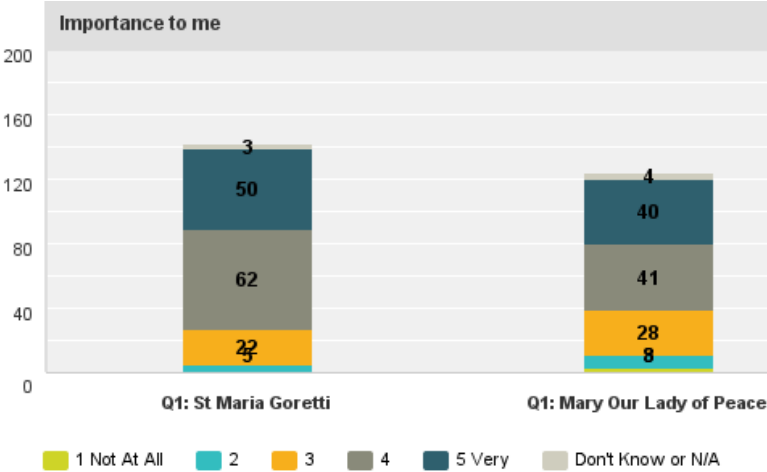


Some opportunity.

# Q38: Asking people for commitments of time, talent and treasure

Answered: 270 Skipped: 14

Answered: 270 Skipped: 14

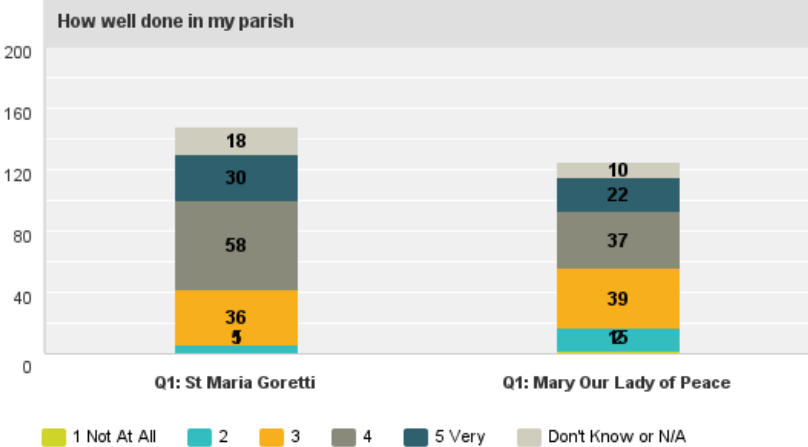
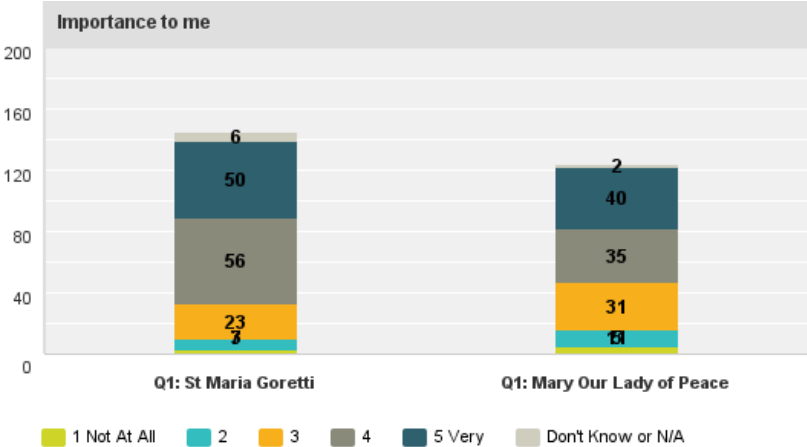


Some opportunity for improvement.

# Q39: Encouragement to become involved in parish ministries

Answered: 273 Skipped: 11

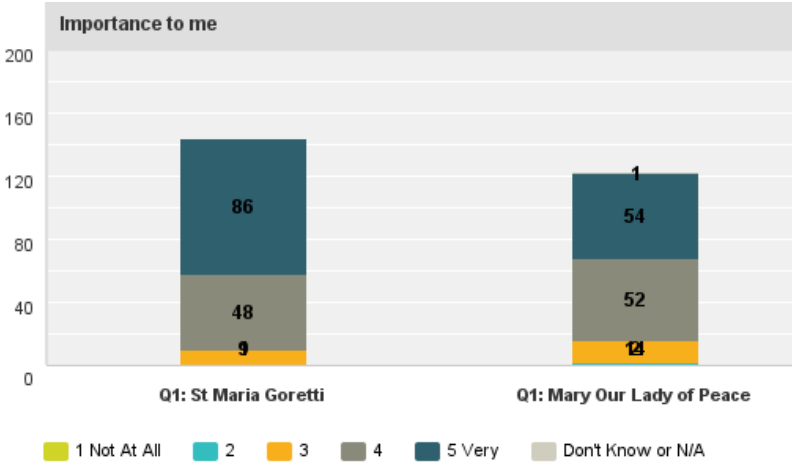
Answered: 273 Skipped: 11



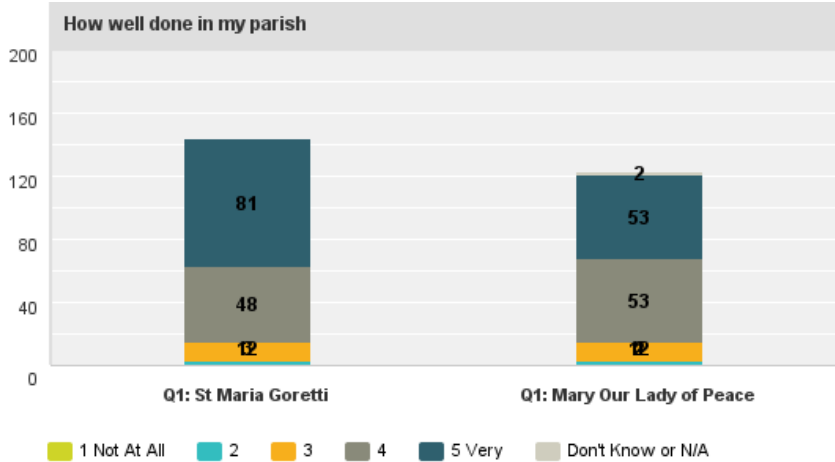
Some improvement opportunities.

# Q40: Well maintained parish facilities and grounds

Answered: 267 Skipped: 17



Answered: 267 Skipped: 17

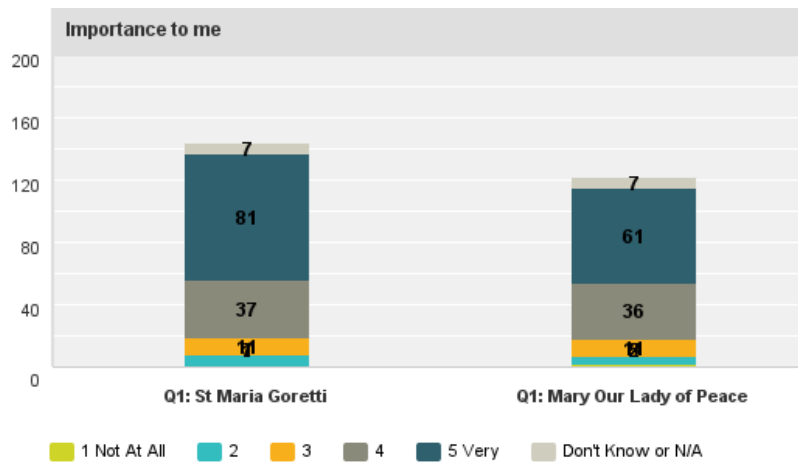


Strength

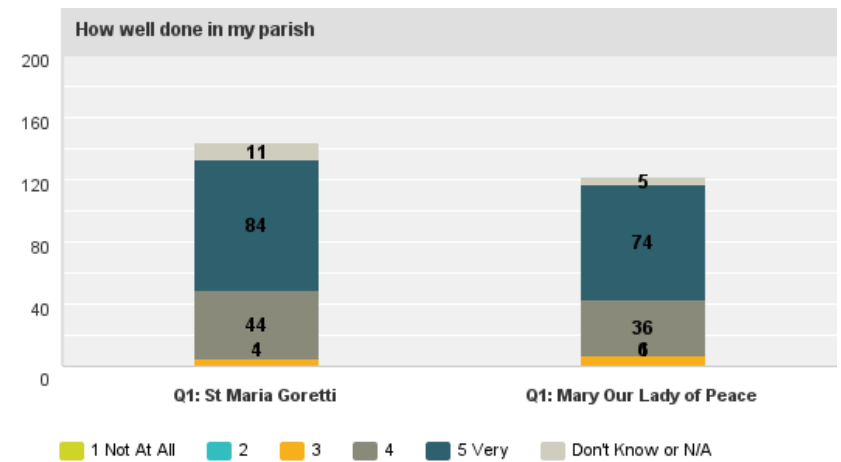


# Q41: Easy access to the church and parish facilities for the physically disabled

Answered: 268 Skipped: 16



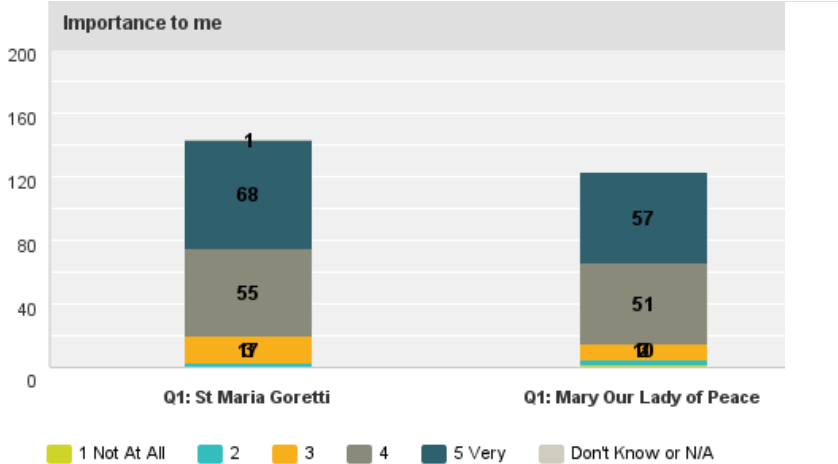
Answered: 268 Skipped: 16



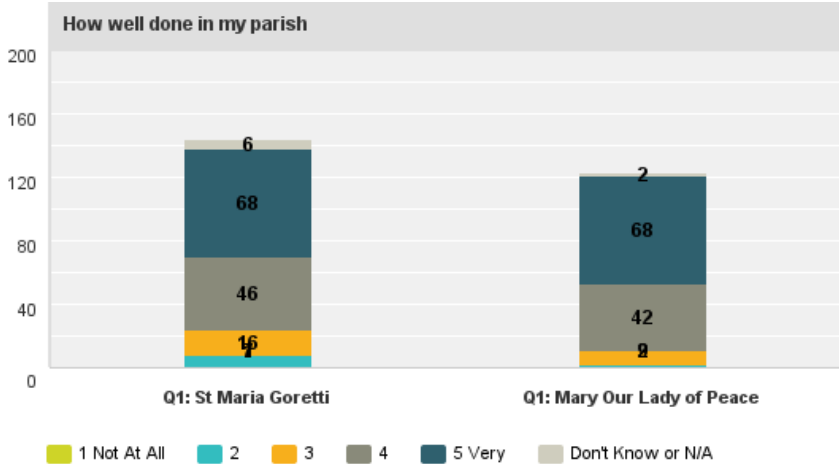
Strength

# Q42: Adequate facilities for meetings and other activities

Answered: 269 Skipped: 15



Answered: 269 Skipped: 15



Strength

## Q43: What are the strengths of my parish

---

### Most common responses from the open ended question

#### SMG Top Categories

- Fr Jim
- Responsive to needs
- Friendly committed staff
- Active “core” group
- Loving community
- Friendly atmosphere
- Welcoming
- Caring community

#### MOLOP Top Categories

- Fr Jim
  - Christian family
  - Welcoming
  - Caring community
  - Facilities
  - Several young families
-

## Q44: What are the opportunities for improvement

---

### Most common responses from the open ended question

#### SMG Top Opportunities

- Reach non-practicing Catholics
- Higher participation
- Adult involvement
- Brief moving homilies
- Youth involvement
- Reach younger families

#### MOLOP Top Opportunities

- Reach non-practicing Catholics
  - More mass options
  - Adult involvement
  - Social activities for all
  - Ministry participation
  - Youth activities
  - One hour mass
  - Brief moving homilies
  - Better communication
  - Youth involvement
-